



BEAUTY COTTAGE®
PROFESSIONAL

YOUR TRUSTED BRAND FOR PROFESSIONAL CARE

行家的明智选择，
您最值得信赖的专业护理品牌



脸部护理系列 FACE CARE SERIES





Beauty Cottage – Excellence in Professional Skincare

Beauty Cottage provides a comprehensive and effective range of professional skincare treatments. All products have stood the test of time, ensuring safety, reliability, and remarkable results. Each product is carefully developed by an expert team, using meticulously selected high-quality ingredients and scientifically formulated according to international quality standards and production protocols.

We promise that all Beauty Cottage products are **free from harmful ingredients such as alcohol, mineral oils, paraffin, petroleum jelly, silicones, parabens, preservatives, animal-derived ingredients (e.g., lanolin), genetically modified components, sulfate surfactants (such as SLS, ALS, SLES, ALES), DEA, MEA, PEG thickeners, chemical drugs, artificial fragrances, and artificial colorants.** Our products are safe and gentle, providing the finest care for your skin.

Beauty Cottage selects verified plant extracts, such as certified organic aloe vera, cucumber, horse chestnut, licorice, seaweed, green tea, as well as natural essential oils and other nourishing ingredients, ensuring each product delivers excellent therapeutic benefits for long-lasting skin care and repair.

As the brand of choice for professionals, Beauty Cottage is committed to offering every customer a safe, professional, efficient, and cost-effective skincare experience. Whether for personal daily use or salon treatments, our products help you achieve your ideal skincare results, leaving your skin glowing with natural radiance.

Beauty Cottage – Your Trusted Skincare Expert!

美丽工作坊——卓越专业美容护理品牌

美丽工作坊致力于提供全面且高效的专业美容护理系列，所有产品均通过时间的考验，确保安全可靠、效果显著。每一款产品都由专家团队精心研发，选用经过严格筛选的优质原料，并采用科学配方，按照国际优质标准和操作规范精细生产。

我们承诺，美丽工作坊的所有产品绝不含任何有害成分：酒精、矿物油、石蜡、凡士林、硅油、对羟基苯甲酸酯、防腐剂、动物来源成分（如羊毛脂等）、基因改造成分、硫酸盐活性剂（如SLS、ALS、SLES、ALES等）、DEA、MEA、PEG增稠剂、化学药物及人工香精与人工色素等。安全温和，给您的肌肤最细致的呵护。

美丽工作坊精选经过验证的植物提取物，如认证的有机芦荟、小青瓜、七叶树、甘草、海藻、绿茶等，以及天然香薰精油和其他营养成分，确保每款产品都具有卓越的治疗效果，为您的肌肤带来持久的呵护与修复。

作为专业人士的首选品牌，美丽工作坊一直致力于为每一位顾客提供 安全、专业、高效、物超所值 的美容护理体验。无论是个人日常使用，还是沙龙专业护理，我们的产品都能帮助您实现理想的美肤效果，让肌肤焕发自然光彩。

美丽工作坊——您值得信赖的美容护理专家！





BEAUTY COTTAGE®
PROFESSIONAL

Face Series 1

Cleansing Milk & Make Up-Remover 洁面及卸妆乳

KCM01 (1000g)



Cleansing Milk & Make-Up Remover (Face & Body) 洁面卸妆奶

Special 2 in 1 formula, gently yet deeply cleans skin dirt and impurities, as well as make-up. Provide moisturizing, softening, and toning to skin while cleansing. Oil free, mild formula, suitable for normal and dry skin.

独特的2合1配方，温和而深入地清洁肌肤污垢、杂质以及化妆品。清洁的同时，提供滋润、柔软和紧致效果。无油、温和的配方，适合干性和正常肤质使用。

Active Ingredients: Rosa Centifolia (Rose) Flower Water, Aloe Barbadensis (Aloe Vera) Leaf Juice, Glycyrrhiza Glabra (Licorice) Root Extract, Chamomilla Recutita (Matricaria) Flower Extract, Cucumis Sativus (Cucumber) Fruit Extract, Aesculus Hippocastanum (Horse Chestnut) Extract, Panthenol (Pro-vitamin B5), Niacinamide (Vitamin B3), Tocopheryl Acetate (Vitamin E), Sodium Hyaluronate, ... etc

USAGE:

1. Use as a Make-up Remover: Apply Cleansing Milk onto a piece of cotton wool and wipe off all trace of make-up.
2. Use as a Cleansing Milk: Apply Cleansing Milk onto face, massage gently to clean the face and neck, rinse off with water.

用法:

1. 用作卸妆奶: 将产品倒入卸妆棉上，再擦拭卸掉彩妆。
2. 用作洁面奶: 将产品涂抹于脸部，轻轻按摩后用清水洗净。

KCM02 (1000g)



Shake Well
Before Use

Make-Up Remover (Eyes & Face) 温和卸妆液

Water based make-up remover. Alcohol free. Excellent removing all trace of make-up of face & eyes, even stubborn make-up. Protect against the pigment deposit into your skin tissue. This unique formula provides hydrating, softening and moisturizing to your skin after cleansing.

一款无酒精的卸妆液。卓效卸除脸部和眼部的所有化妆残留，甚至是顽固彩妆。有效防止色素沉积进入肌肤组织。独特的配方在清洁后为肌肤提供滋润、柔软和保湿效果。

Active Ingredients: Rosa Centifolia (Rose) Flower Water, Panthenol (Pro-vitamin B5), Aloe Barbadensis (Aloe Vera) Leaf Juice, Cucumis Sativus (Cucumber) Fruit Extract, Glycyrrhiza Glabra (Licorice) Root Extract, Chamomilla Recutita (Matricaria) Flower Extract, Aesculus Hippocastanum (Horse Chestnut) Extract, Tocopheryl Acetate (Vitamin E), Centella Asiatica Extract, ... etc

USAGE: Apply the product onto a piece of cotton wool, wipe off all trace of make-up, repeat if necessary, rinse off with water. SHAKE WELL BEFORE USE.

用法: 将产品倒入卸妆棉上，擦拭卸掉彩妆，如需请重复擦拭，接着用清水洗净。使用前摇均。

Face Series 2

Cleansing Gel (Foam) 洁面露 (发泡型)

KCC01 (1000g)



Cleansing Gel (Foam) – Brightening & Moisturizing 亮白滋润洁面凝胶

Natural based foam cleanser gentle to skin. Especially clean skin dirt and impurities, moisturizing formula causes no dryness to skin but help brighten skin tone. Leave you a smooth and radiant complexion.

天然植物基泡沫洁面乳，温和呵护肌肤。特别清洁肌肤污垢和杂质，保湿配方不会让肌肤干燥，反而有助于提亮肤色。使用后，肌肤光滑细腻，焕发自然光彩。

Active Ingredients: Niacinamide, Acetyl Glucosamine, Broussonetia Kazinoki Root Extract, Morus Alba Bark Extract, Pyrus Malus (Apple) Fruit Extract, Camellia Japonica Leaf Extract, Camellia Sinensis Leaf Extract, Centella Asiatica Extract, Tricholoma Matsutake Extract, Panthenol (Pro-vitamin B5), Aloe Barbadensis (Aloe Vera) Leaf Juice, ... etc



BEAUTY COTTAGE®
PROFESSIONAL

KCC02 (1000g)



Cleansing Gel (Foam) – Purifying & Balancing 净化平衡洁面凝胶

Specially formulated for oily, blemish skin. Effectively remove skin excess sebum and other impurities. Helps to clear skin pores and refresh skin. Specially combined plant extracts help purify skin blemishes.

特别为油性及瑕疵肌肤配方研制。有效去除肌肤多余油脂和其他杂质，帮助清理毛孔，焕活肌肤。含植萃精华有助于净化肌肤瑕疵。

Active Ingredients: Nasturtium Officinale Extract, Arctium Majus (Burdock) Root Extract, Salvia Officinalis (Sage) Leaf Extract, Citrus Limon (Lemon) Peel Extract, Hedera Helix (Ivy) Leaf Extract, Saponaria Officinalis Leaf/root Extract, Fucus Vesiculosus (Algae) Extract, Panthenol (Pro-vitamin B5), Aloe Barbadensis (Aloe Vera) Leaf Juice, ... etc

KCC03 (1000g)



Cleansing Gel (Foam) – Calming & Hydrating 舒缓补水洁面凝胶

Mild formula, causes no dryness. Gently remove and clean skin dirt and make-up residues. Aloe Vera & Chamomilla Extract to help calm down skin.

温和配方，不会导致干燥。轻柔去除肌肤污垢和化妆残留。芦荟和洋甘菊提取物有助于舒缓肌肤。

Active Ingredients: Chamomilla Recutita (Matricaria) Flower Extract, Aesculus Hippocastanum (Horse Chestnut) Extract, Glycyrrhiza Glabra (Licorice) Root Extract, Cucumis Sativus (Cucumber) Fruit Extract, Panthenol (Pro-vitamin B5), Aloe Barbadensis (Aloe Vera) Leaf Juice, Benzoic Acid, ... etc



USAGE: Wet face, mix the cleanser with water to produce rich foam to clean face, rinse off thoroughly with water.

用法: 将产品和清水混合，揉搓起泡后涂抹脸部，接着用清水洗净。

Face Series 3

Toner 化妆水

KTN01 (1000g)



Toner – Lightening & Hydrating 亮白补水爽肤水

Provide hydrating and moisturize to skin. Refresh and skin texture. Help lighten and brighten skin tone. Keep your skin a fairer and younger looking.

为肌肤提供深层滋润和保湿，焕活肌肤质地。帮助提亮肤色，使肤色更加明亮。让肌肤保持更加嫩白、年轻的外观。

Active Ingredients: Niacinamide, Acetyl Glucosamine, Broussonetia Kazinoki Root Extract, Morus Alba Bark Extract, Pyrus Malus (Apple) Fruit Extract, Camellia Japonica Leaf Extract, Camellia Sinensis Leaf Extract, Centella Asiatica Extract, Tricholoma Matsutake Extract, Rosa Centifolia (Rose) Flower Water, Panthenol (Pro-vitamin B5), Aloe Barbadensis (Aloe Vera) Leaf Juice, Cucumis Sativus (Cucumber) Fruit Extract, Lactic Acid, Pelargonium Graveolens Oil, Litsea Cubeba Fruit Oil, Cinnamomum Camphora (Camphor) Bark Oil, ... etc



BEAUTY COTTAGE®
PROFESSIONAL

KTN02 (1000g)



Toner – Purifying & Balancing 净化平衡爽肤水

Specially formulated for oily, blemish skin. Help control excess oil to reduce blemishes and breakouts, refine pores and smoothen skin.

特别为油性及瑕疵肌肤配方研制。帮助控油，减少瑕疵和痘痘，收敛毛孔，平滑肌肤。

Active Ingredients: Panthenol (Pro-vitamin B5), Nasturtium Officinale Extract, Arctium Majus (Burdock) Root Extract, Salvia Officinalis (Sage) Leaf Extract, Citrus Limon (Lemon) Peel Extract, Hedera Helix (Ivy) Leaf Extract, Saponaria Officinalis Leaf/root Extract, Fucus Vesiculosus (Algae) Extract, Hamamelis Virginiana (Witch Hazel) Leaf Extract, Aloe Barbadensis (Aloe Vera) Leaf Juice, Melaleuca Alternifolia (Tea Tree) Leaf Oil, ... etc

KTN03 (1000g)



Toner – Calming & Repairing 舒缓修护爽肤水

Help calm down skin uncomfortable conditions. Refresh and soften skin texture. Smoothen and soften skin.

帮助舒缓肌肤不适，焕活并柔软肌肤质地，平滑并柔滑肌肤。

Active Ingredients: Aloe Barbadensis (Aloe Vera) Leaf Juice, Chamomilla Recutita (Matricaria) Flower Extract, Glycyrrhiza Glabra (Licorice) Root Extract, Cucumis Sativus (Cucumber) Fruit Extract, Aesculus Hippocastanum (Horse Chestnut) Extract, Centella Asiatica Extract, Sodium PCA, Panthenol (Pro-vitamin B5), Sodium Hyaluronate, ... etc

KTN04 (1000g)



Toner – Lifting & Moisturizing 紧实滋润爽肤水

Promote skin suppleness and elasticity, moisturizing, nourishing, firming, and smoothing the skin. Help reduce fine lines and wrinkles.

促进肌肤的柔软性和弹性，保湿、滋养、紧致和平滑肌肤。帮助减少细纹和皱纹。

Active Ingredients: Sodium PCA, Panthenol (Pro-vitamin B5), Rosa Centifolia (Rose) Flower Water, Avena Sativa (Oat) Kernel Extract, Aloe Barbadensis (Aloe Vera) Leaf Juice, Pelargonium Graveolens Oil, Litsea Cubeba Fruit Oil, Cinnamomum Camphora (Camphor) Bark Oil, ... etc



USAGE: After face cleansing, apply Toner onto face, pat gently and evenly. Or use as a powder mask lotion to enhance the performance of the mask.

用法: 洁面后，将产品涂抹于脸部，轻轻拍打均匀。或搭配面膜粉使用以提升面膜功效。

Face Series 4

Scrubber 磨砂

KFS01 (1000g)



Scrubber (Milk) 磨砂乳

Effectively scrub away excess dead skin cells. Smoothen and soften skin. Brightening and lightening skin as well. The fine jojoba beads cause no damage to skin but moisturizing the skin while scrubbing. Leave to you a more radiant and fairer skin looking.

有效去除多余的死皮细胞，平滑并柔软肌肤。提亮肤色，均匀肤色。细腻的荷荷巴颗粒温和不刺激肌肤，清洁的同时滋润肌肤。让您的肌肤更加明亮，呈现更嫩白的光彩。

Active Ingredients: Sodium PCA, Panthenol (Pro-vitamin B5), Tocopheryl Acetate (Vitamin E), Niacinamide (Vitamin B3), Rosa Centifolia (Rose) Flower Water, Aloe Barbadensis (Aloe Vera) Leaf Juice, Lactic Acid, Cucumis Sativus (Cucumber) Fruit Extract, ... etc



BEAUTY COTTAGE®
PROFESSIONAL

KFS02 (1000g)

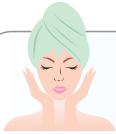


Scrubber (Gel) 磨砂凝胶

Gently scrub and massage skin by the fine of jojoba beads. Effectively remove skin excess dead cells and help to clear skin pores. Oil free formulation contains plant extracts special for smoothing, purifying the skin texture and rebalancing skin condition.

通过荷荷巴颗粒轻柔地摩擦和按摩肌肤，有效去除肌肤多余的死皮细胞，帮助清洁毛孔。无油配方含有专门用于平滑、净化肌肤质地并重塑肌肤状态的植物提取物。

Active Ingredients: Aloe Barbadensis (Aloe Vera) Leaf Juice, Chamomilla Recutita (Matricaria) Flower Extract, Aesculus Hippocastanum (Horse Chestnut) Extract, Glycyrrhiza Glabra (Licorice) Root Extract, Cucumis Sativus (Cucumber) Fruit Extract, Camellia Sinensis (Green Tea) Leaf Extract, Panthenol (Pro-vitamin B5), ... etc



USAGE: After make-up removing, wet face with water, apply the scrubber on palm or face, massage and scrub the face and neck gently, especially on dark skin areas. Then rinse off thoroughly with water. Use 1 to 3 times a week.

用法: 卸妆后，先湿润脸部，再涂抹磨砂奶在手掌或脸上，然后轻轻按摩脸部和颈部，特别是暗沉部位。接着用卸妆棉擦拭干净或清水洗净。一星期用1至3次。

KMA02
(500g)



KMA02A
(120g)

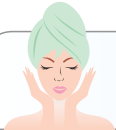


Peeling Gel 磨砂凝胶

Effectively remove excess dead cells from skin surface. Smoothen and soften skin. Help to clear skin pores and refine skin texture. Help brighten skin tone and reduce blemishes.

有效去除肌肤表面多余的死皮细胞，平滑并柔软肌肤。帮助清洁毛孔，细致肌肤质地。提亮肤色，减少瑕疵。

Active Ingredients: Chamomilla Recutita (Matricaria) Flower Extract, Aesculus Hippocastanum (Horse Chestnut) Extract, Glycyrrhiza Glabra (Licorice) Root Extract, Cucumis Sativus (Cucumber) Fruit Extract, Tocopheryl Acetate (Vitamin E), Ascorbyl Palmitate (Vitamin C), Citrus Grandis (Grapefruit) Fruit Extract, Ananas Sativus (Pineapple) Fruit Extract, Papain, Aloe Barbadensis (Aloe Vera) Leaf Juice, ... etc



USAGE: Apply the product onto dry skin, massage gently until residue appear, wipe it off with dry tissue or cotton wool then start with other facial procedures, 1-3 times a week.

用法: 将产品涂抹于干燥的脸部，轻轻按摩直至污垢出现，用纸巾或化妆棉擦拭干净后开始使用后续护肤品。一星期用1至3次。

Face Series 5

Pre-Treatment Lotion 护理液

KPL01 (1000g)



Pre-Treatment Lotion 软化角质护理液

Help dissolve and remove excess dead skin cells. Help protect against blackheads, clogged skin pores and skin blemishes. Lighten and even skin tone.

帮助溶解并去除多余的死皮细胞，减少黑头、毛孔堵塞和肌肤瑕疵。提亮肤色，均匀肤色。

Active Ingredients: Lactic Acid, Panthenol (Pro-vitamin B5), Aloe Barbadensis (Aloe Vera) Leaf Juice, ... etc.



USAGE: After cleansing and drying, put the Lotion on to face gently with a brush or cotton wool, or prepare a cotton wool with the Lotion and leave on to blemish areas at least 15 mins for extraction treatment of blemishes.

Cautions: Contains hydrogen peroxide. Avoid contact with eyes. Rinse immediately if product comes into contact with them. Keep out of reach of children. Irritation or allergy may occur. May not suitable to fragile, sensitive or damaged skin. If irritation occur, discontinue the product. Before application, patch test is recommended.

Storage: Keep in cool area and avoid direct sunlight. Keep container closed after use

用法: 洁面后，用刷子或化妆棉涂抹产品于脸部，静置至少15分钟以达到净化效果。

注意: 含过氧化氢，避免接触眼睛，如接触马上用清水清洗。远离儿童。可能出现皮肤刺激或敏感，不适合脆弱、敏感或受损肌使用。如皮肤出现刺激现象，马上停止使用产品。使用前，建议先进行皮肤测试。



BEAUTY COTTAGE®
PROFESSIONAL

Face Series 6

Multi Active Gel 多功能护肤凝胶

KMA01 (1000g)



Multi Active Gel 多功能凝胶

Oil free, fresh light gel provides moisturizing, hydrating, and softening to skin, keeps your skin to a healthy younger looking. It also can be used as a conduction gel for beauty equipment such as ultrasound.

无油、清爽轻盈的凝胶为肌肤提供滋润、补水和柔软效果，使肌肤保持健康、年轻的外观。也可作为美容仪器（如超声波）的导入凝胶使用。

Active Ingredients: Aloe Barbadensis (Aloe Vera) Leaf Juice, Cucumis Sativus (Cucumber) Fruit Extract, Camellia Sinensis (Green Tea) Leaf Extract, Panthenol (Pro-vitamin B5), Marine Collagen, Sodium Hyaluronate, ... etc

USAGE: apply the product onto cleansed face, can be used with serums, ampoules and ultrasound equipments.

用法: 将本产品涂于清洁后的面部，或配合各种精华素、安瓶和仪器使用效果更佳。

Face Series 7

Massage Cream 按摩霜

KMC01
(500g)

KMC03
(1000g)

Massage Cream & Intensive Moisturizer 美白滋润按摩霜



For dry to normal skin massage. Intensively moisturize and nourish skin. Leave skin soft, smooth and bright.

适用于干性至中性肌肤按摩，深层滋润并滋养肌肤。使肌肤柔软、光滑、明亮。

Active Ingredients: Olea Europaea (Olive) Husk Oil, Prunus Amygdalus Dulcis (Sweet Almond) Oil, Panthenol (Pro-vitamin B5), Tocopheryl Acetate (Vitamin E), Vitis Vinifera (Grape) Seed Oil, Aloe Barbadensis (Aloe Vera) Leaf Juice, ... etc

KMC02(200g)

Gold Facial Massage Cream & Intensive Moisturizer 纯金脸部按摩霜



Rich massage cream with pure gold provides deep moisturizing, nourishing, and lightening to skin. Help to fight against skin wrinkles and fine lines. Suitable for dry, aging skin, can be used together with ampoules, serums or essential oils.

富含纯金的按摩霜，为肌肤提供深层滋润、滋养和提亮效果。帮助抵抗肌肤皱纹和细纹。适合干燥、老化肌肤使用，可与安瓶、精华液或精油一起使用。

Active Ingredients: Olea Europaea (Olive) Husk Oil, Prunus Amygdalus Dulcis (Sweet Almond) Oil, Squalane, Rosa Centifolia (Rose) Flower Water, Aloe Barbadensis (Aloe Vera) Leaf Juice, Cucumis Sativus (Cucumber) Fruit Extract, Aesculus Hippocastanum (Horse Chestnut) Extract, Panthenol (Pro-vitamin B5), Tocopheryl Acetate (Vitamin E), Ascorbyl Tetraisopalmitate (Vitamin C), ... etc

USAGE: apply to cleansed face gently massage. Rinse off or leave on. Can be used with ampoules, serums and essential oils.

用法: 洗脸及爽肤后，轻轻地按摩皮肤，然后洗净或保留，也可与安瓶、精华素及香精油等一起使用。



BEAUTY COTTAGE®
PROFESSIONAL

Face Series 8

Massage Gel 按摩凝胶

KMG01 (1000g)



Massage Gel & Moisturizer (Hydrating & Calming) 调理舒缓按摩凝胶

For oily to normal skin massage. Smoothing and hydrating skin. Leave skin fresh, soft, and smooth. Can be used together with ampoules, serums or essential oils.

适用于油性至中性肌肤按摩，平滑并滋润肌肤。让肌肤保持清新、柔软和平滑。可与安瓶、精华液或精油一起使用。

Active Ingredients: Aloe Barbadensis (Aloe Vera) Leaf Juice, Hamamelis Virginiana (Witch Hazel) Leaf Extract, Panthenol (Pro-vitamin B5), Chamomilla Recutita (Matricaria) Flower Extract, Aesculus Hippocastanum (Horse Chestnut) Extract, Glycyrrhiza Glabra (Licorice) Root Extract, Cucumis Sativus (Cucumber) Extract Fruit Extract, ... etc



USAGE: Apply Massage Gel to cleansed face to massage skin. It can be applied together with Ampoules, Aromathrapy or Essential Oils for skin treatments.

用法: 洗脸及爽肤后，轻轻地按摩皮肤，然后洗净或保留，也可与安瓶、精华素及香精油等一起使用，以做各种皮肤治疗。

Face Series 9

Ampoule 安瓶

KAM01

KAM01A

Hydrating & Moisturizing Ampoule (Hyaluronic Acid. Y-PGA. NMF) 4Gx10PCS 补水保湿安瓶

Lock in moisture with long lasting hydration, leaving skin feeling supple and hydrated to the touch. Formulated with Hyaluronic Acid and humectant PGA to enhance skin elasticity, seal the moisture in your skin for a more rejuvenated appearance.

锁住水分，提供持久滋润，让肌肤感觉柔软、滋润。配方中含有透明质酸和聚谷氨酸，帮助提升肌肤弹性，锁住肌肤水分，呈现更加焕发活力的容颜。

Active Ingredients: Saccharide Isomerate, Sodium PCA, Sodium Lactate, Cucumis Sativus (Cucumber) Fruit Extract, Aloe Barbadensis (Aloe Vera) Leaf Juice, Panthenol (Pro-vitamin B5), Sodium Hyaluronate, Lactic Acid, Sodium Acetylated Hyaluronate, Sodium Polyglutamate, ... etc

KAM02

KAM02A

Anti-Wrinkles Ampoule (DNA. Stem Cell. Hydrolyzed HA) 抗皱安瓶

A nourishing formula enriched with various Hyaluronic Acids to deeply moisture for smoother appearance. The Orange Stem Cells help to recover elasticity and reduce oxidative damage to restore a brighter and youthful look.

这款滋养配方富含多种透明质酸，深层滋润肌肤，使肌肤更加光滑。橘子干细胞帮助恢复肌肤弹性，减少氧化损伤，恢复更加明亮和年轻的外观。

Active Ingredients: Citrus Aurantium Dulcis (Orange) Callus Culture Extract, Zea Mays (Corn) Kernel Extract, Fomes Officinalis (Mushroom) Extract, Marine Collagen, Sodium PCA, Sodium Hyaluronate, Hydrolyzed Sodium Hyaluronate, ... etc



BEAUTY COTTAGE®
PROFESSIONAL

KAM03

KAM03 A

Lightening Ampoule (Arbutin. Vitamin C. Vitamin B3) 4Gx10PCS

美白安瓿

Enriched with Arbutin and Vitamin C helps lighten up dark spots on the skin, provide antioxidant protection, making your complexion healthier and more even. Whilst Vitamin B3 works to retain skin's moisture content and brighten skin.

富含熊果素和维生素C，帮助提亮肌肤，减少色斑，提供抗氧化保护，让肤色更加健康均匀。同时，维生素B3有助于保持肌肤的水分含量，使肌肤更加明亮。

Active Ingredients: Niacinamide (Vitamin B3), Acetyl Glucosamine, Broussonetia Kazinoki Root Extract, Morus Alba Bark Extract, Pyrus Malus (Apple) Fruit Extract, Camellia Japonica Leaf Extract, Camellia Sinensis Leaf Extract, Centella Asiatica Extract, Tricholoma Matsutake Extract, Arbutin, Aloe Barbadensis (Aloe Vera) Leaf Juice, Sodium Ascorbyl Phosphate (Vitamin C), ... etc



KAM04

KAM04A

Purifying Ampoule (Tea Tree. Burdock. Lavender) 4Gx10PCS

净肤安瓿

A highly effective form of Tea Tree Oil. Fortified with Burdocks and calming Lavender to purify and calm skin discomfort, reduce blemishes without drying. Leaving skin feeling refreshed and brighter.

一款高效的茶树油配方，结合了牛蒡和舒缓薰衣草，能够净化肌肤、舒缓不适，减少瑕疵而不干燥。使用后，肌肤感觉清新、明亮。

Active Ingredients: Nasturtium Officinale Extract, Arctium Majus (Burdock) Root Extract, Salvia Officinalis (Sage) Leaf Extract, Citrus Limon (Lemon) Peel Extract, Hedera Helix (Ivy) Leaf Extract, Saponaria Officinalis Leaf/root Extract, Fucus Vesiculosus (Algae) Extract, Zinc Lactate, Aloe Barbadensis (Aloe Vera) Leaf Juice, Melaleuca Alternifolia (Tea Tree) Leaf Oil, ... etc



KAM05

KAM05A

Calming & Hydrating Ampoule (Aloe Vera. Chamomilla. Licorice) 4Gx10PCS

舒缓安瓿

Helps calm discomfort and moisture skin for clean, refreshed skin with Aloe Vera ingredient. Paired with Chamomilla and Licorice to lighten pores, fortifying skin's barrier to provide antioxidant protection for a brighter and supple skin.

蕴含芦荟成分，帮助舒缓肌肤不适并滋润肌肤，令肌肤清爽洁净。结合洋甘菊和甘草，收敛毛孔，强化肌肤屏障，为肌肤提供抗氧化保护，让肌肤更加明亮和柔嫩。

Active Ingredients: Aloe Barbadensis (Aloe Vera) Leaf Juice, Chamomilla Recutita (Matricaria) Flower Extract, Glycyrrhiza Glabra (Licorice) Leaf Extract, Aesculus Hippocastanum (Horse Chestnut) Extract, Panthenol (Pro-vitamin B5), Lactic Acid, Saccharide Isomerate, Cucumis Sativus (Cucumber) Fruit Extract, Dipotassium Glycyrrhizate, ... etc



KAM06

KAM06A

Eye Care Ampoule (Glucan. HA. Peptide) 3Gx10PCS

眼部护理安瓿

Enriched with Glucan to lock in hydration, energize and refreshed dull eyes. Infused with Hyaluronic Acids and Active Peptide to firm, reduce puffiness and brighten dark circles for youthful eye complexion.

富含葡聚糖，帮助锁住水分，提神并焕活暗沉的眼部肌肤。添加透明质酸和活性肽，紧致肌肤，减少浮肿，淡化黑眼圈，让眼周肌肤焕发青春光彩。

Active Ingredients: Hydrolyzed Soy Protein, Crataegus Monogina Flower Extract, Jasminum Sambac Flower Extract, Paullinia Cupana (Guarana) Fruit Extract, Camellia Sinensis (Green Tea) Leaf Extract, Sodium Hyaluronate, Sodium Carboxymethyl Beta-glucan, Sodium Acetylated Hyaluronate, ... etc





BEAUTY COTTAGE®
PROFESSIONAL

KAM08

KAM08A

Repairing & Toning Ampoule (Collagen. Caviar. Glycogen) 4Gx10PCS

修复滋养安瓿

Features of Collagen, Caviar and Glycogen for a firming, refined and smoothing skin. This luxurious yet lightweight ampoule can intensively promote skin elasticity and protect skin from the inside out to maintain youthful appearance.

富含胶原蛋白、鱼子酱和糖原，具有紧致、细致和平滑肌肤的功效。这款奢华而轻盈的安瓿能深层促进肌肤弹性，从内到外保护肌肤，保持年轻的外观。

Active Ingredients: Marine Collagen, Caviar Extract, Glycogen, Aloe Barbadensis (Aloe Vera) Leaf Juice, Panthenol (Pro-vitamin B5), Sodium Hyaluronate, ... etc



KAM09

KAM09A

Anti-Oxydant Ampoule (Multi-Vitamins. Idebenone. Green Tea) 4Gx10PCS

抗氧化安瓿

Infused with potent antioxidant Idebenone and Green Tea for anti-aging and healthier looking skin, and help reduce skin damage like discoloration, dullness, and uneven tone.

富含强效抗氧化剂Idebenone和绿茶，具有抗衰老功效，让肌肤看起来更加健康，并帮助减少肌肤损伤，如色素沉着、暗沉和肤色不均。

Active Ingredients: Panthenol (Pro-vitamin B5), Niacinamide (Vitamin B3), Tocopheryl Acetate (Vitamin E), Retinyl Palmitate (Vitamin A), Ascorbyl Tetraisopalmitate (Vitamin C), Idebenone (Hydroxydecyl Ubiquinone), Camellia Sinensis (Green Tea) Leaf Extract, Glycyrrhiza Glabra (Licorice) Root Extract, Chamomilla Recutita (Matricaria) Flower Extract, Cucumis Sativus (Cucumber) Fruit Extract, Aesculus Hippocastanum (Horse Chestnut) Extract, ... etc



KAM10

KAM10A

Balancing Ampoule (Witch Hazel. Trace Element. Mushroom) 4Gx10PCS

控油安瓿

Enriched with Witch Hazel and essential minerals to regulate skin's moisture content, balance production of sebum and maintain skin flexibility. Infused with Mushroom to hydrate and relieve discomfort, creates a fresh and smoother look.

富含金缕梅和必需矿物质，帮助调节肌肤水分含量，平衡油脂分泌，保持肌肤的柔韧性。添加蘑菇成分，提供滋润并缓解不适，打造清新光滑的肌肤。

Active Ingredients: Fomes Officinalis (Mushroom) Extract, Hamamelis Virginiana (Witch Hazel) Extract, Nasturtium Officinale Extract, Arctium Majus (Burdock) Root Extract, Salvia Officinalis (Sage) Leaf Extract, Citrus Limon (Lemon) Peel Extract, Hedera Helix (Ivy) Leaf Extract, Saponaria Officinalis Leaf/root Extract, Fucus Vesiculosus (Algae) Extract, Phenoxyethanol, Zinc Lactate (Trace Element), Aloe Barbadensis (Aloe Vera) Leaf Juice, Panthenol (Pro-vitamin B5), ... etc



KAM12

KAM12A

Oxygenating Ampoule (Biopeptides. Lupine. Ginkgo) 4Gx10PCS

增氧安瓿

Its Biopeptides and Ginkgo Extracts, delivers plump, bouncy skin while targeting a dull, uneven complexion. The anti-aging Lupine renews skin outer layer, reduce wrinkle formation to reveal a smoother, brighter and refined skin texture.

其生物肽和银杏提取物能为肌肤带来饱满、弹性的效果，同时改善暗沉和不均匀的肤色。抗衰老成分——羽扇豆提取物有助于更新肌肤外层，减少皱纹形成，展现更加平滑、明亮和细致的肌肤质地。

Active Ingredients: Hydrolyzed Soy Protein, Hydrolyzed Lupine Protein Octenylsuccinate, Ginkgo Biloba Leaf Extract, Chamomilla Recutita (Matricaria) Flower Extract, Aesculus Hippocastanum (Horse Chestnut) Extract, Glycyrrhiza Glabra (Licorice) Root Extract, Cucumis Sativus (Cucumber) Fruit Extract, Aloe Barbadensis (Aloe Vera) Leaf Juice, Panthenol (Pro-vitamin B5), ... etc





BEAUTY COTTAGE®
PROFESSIONAL

KAM13

KAM13A

Lifting & Firming Ampoule (BTX-L. Soy Protein. Zea Mays) 4Gx10PCS

抗皱紧肤安瓿

Mimics the effect of Botox in the skin to lift, refine and reshape facial contouring for ageless looking. Contains Soy Protein to smoothen and soften skin, whilst Corn Starch helps to moisture and remove excessive oil, leaving skin feeling firmer and supple.

模拟Botox效果，提拉、细致并重塑面部轮廓，打造无龄肌肤。含有大豆蛋白，能平滑和柔软肌肤，同时Corn Starch帮助滋润并去除多余油脂，让肌肤更加紧致和富有弹性。

Active Ingredients: Zea Mays (Corn) Kernel Extract, Hydrolyzed Soy Protein, Bacillus Ferment, Fucus Vesiculosus (Algae) Extract, Laminaria Digitata Extract, Sodium Hyaluronate, Spirulina Maxima Extract, Porphyra Umbilicalis Extract, Ascophyllum Nodosum Extract, Sodium Carboxymethyl Beta-glucan, Acetyl Hexapeptide-1, ... etc

KAM14

KAM14A

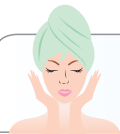
Rejuvenating Ampoule (Peptides. Squalane. Vitamin E) 4Gx10PCS

再生因子安瓿

Squalane to plump, hydrate, and seal in moisture for less-wrinkled appearance. Added with antioxidant Vitamin E to strengthen skin barrier for a smooth complexion, improve the look of skin firmness and elasticity.

角鲨烯为肌肤提供丰盈、滋润并锁住水分，减少皱纹的出现。加入抗氧化剂维生素E，强化肌肤屏障，打造光滑的肤色，并改善肌肤的紧致度和弹性。

Active Ingredients: Squalane, Hexapeptide-11, Bacillus/soybean Ferment Extract, Tocopheryl Acetate (Vitamin E), Panthenol (Pro-vitamin B5), Oligopeptide-1, Sodium Hyaluronate, Oligopeptide-2, Oligopeptide-3, Acetyl Glutamine, Sodium Carboxymethyl Beta-glucan, Folic Acid, ... etc



USAGE: Apply the Ampoule gently onto cleansed face. Smoothen evenly. Can be used together with mask and beauty equipments. Avoid contact with eyes.

用法： 将安瓿均匀涂敷于干净的面部。可与面膜和美容仪器同时使用。避免涂于眼内。

Face Series 10

Serum
精华素

KSE11

Gold Wrinkles Smoothing Serum 4Gx10PCS

纯金抗皱精华素



A smoothening serum that works to help to delay signs of ageing such as minimize fine lines and wrinkles, uplifting and firming, leaving skin feeling smoother, suppler, and youthful looking.

这款平滑精华能够有效延缓衰老迹象，如减小细纹和皱纹，提升紧致感，让肌肤感觉更加光滑、柔嫩，呈现年轻的外观。

Active Ingredients: Zea Mays (Corn) Kernel Extract, Marine Collagen, Panthenol (Pro-vitamin B5), Fomes Officinalis (Mushroom) Extract, Saccharide Isomerate, Aloe Barbadensis (Aloe Vera) Leaf Juice, Gold, Sodium Hyaluronate, Acetyl Hexapeptide-8, Pentapeptide-3, ... etc



BEAUTY COTTAGE®
PROFESSIONAL

KSE21

Hydrating Serum 4Gx10PCS

补水保湿精华素



Enriched with moisture-locking agents to seal in hydration that help to hydrate, plump, and nourish skin. Helps minimize the appearance of fine lines and wrinkles for overall youthful looking complexion.

富含锁水成分，帮助锁住水分，深层滋润、丰盈并滋养肌肤。有效减少细纹和皱纹的显现，让肌肤呈现整体年轻的光采。

Active Ingredients: Panthenol (Pro-vitamin B5), Betaine, Saccharide Isomerate, Cucumis Sativus (Cucumber) Fruit Extract, Aloe Barbadensis (Aloe Vera) Leaf Juice, Sodium Polyglutamate, Sodium Carboxymethyl Beta-glucan, Sodium Hyaluronate, Sodium Acetylated Hyaluronate, Citrullus Vulgaris (Watermelon) Fruit Extract, Lens Esculenta Fruit Extract, Pyrus Malus (Apple) Fruit Extract, Sodium PCA, ... etc

KSE22

Lifting Serum 4Gx10PCS

紧致提升精华素



Deeply moisturizes, tightens, and helps to lift skin's appearance to fight the signs of skin ageing while reduces fine lines and wrinkles. Leave skin smoother, firmer, and redefined contours.

深层滋润、紧致肌肤，帮助提升肌肤外观，抗衰老的同时减少细纹和皱纹。使肌肤更加光滑、紧致，轮廓更加立体。

Active Ingredients: Fucus Vesiculosus (Algae) Extract, Laminaria Digitata Extract, Spirulina Maxima Extract, Porphyra Leaf Extract, Panthenol (Pro-vitamin B5), Saccharide Isomerate, Phenoxyethanol, Aloe Barbadensis (Aloe Vera) Leaf Juice, Umbilicalis Extract, Ascophyllum Nodosum Extract, Paullinia Cupana (Guarana) Seed Extract, Ilex Paraguariensis (Mate) Sodium Pca, Sodium Hyaluronate, Sodium Acetylated Hyaluronate, ... etc

KSE23

Lightening Serum 4Gx10PCS

美白精华素



A spot-targeting serum that helps even and lighten skin tone, reduce dark spots, leaving skin naturally glow and brighter.

这款针对斑点的精华能够均匀肤色，淡化暗斑，使肌肤自然焕发光彩，明亮如新。

Active Ingredients: Niacinamide (Vitamin B3), Acetyl Glucosamine, Broussonetia Kazinoki Root Extract, Morus Alba Bark Extract, Pyrus Malus (Apple) Fruit Extract, Camellia Japonica Leaf Extract, Camellia Sinensis Leaf Extract, Centella Asiatica Extract, Galactoarabinan, Ergosterol, Panthenol (Pro-vitamin B5), Cucumis Sativus (Cucumber) Fruit Extract, Betaine, Saccharide Isomerate, Phenoxyethanol, Arginine, Aloe Barbadensis (Aloe Vera) Leaf Juice, Tricholoma Matsutake Extract, ... etc

KSE25

Calming Serum 4Gx10PCS

舒缓精华素



A fast absorbing serum that helps to calm skin uncomfortable conditions while helps to strengthen skin barrier, rehydrate skin for a more resilient and smoother complexion.

这款快速吸收的精华能够舒缓肌肤不适，增强肌肤屏障，深层补水，让肌肤更加坚韧光滑，呈现健康细腻的肤质。

Active Ingredients: Aloe Barbadensis (Aloe Vera) Leaf Juice, Panthenol (Pro-vitamin B5), Chamomilla Recutita (Matricaria) Flower Extract, Aesculus Hippocastanum (Horse Chestnut) Seed Extract, Glycyrrhiza Glabra (Licorice) Root Extract, Cucumis Sativus (Cucumber) Fruit Extract, Saccharide Isomerate, Sodium Lactate, Hydrolyzed Opuntia Ficus-Indica Flower Extract, Hydrolyzed Eruca Sativa Leaf, Globularia Alpinum Leaf Extract, ... etc



BEAUTY COTTAGE®
PROFESSIONAL

KSE26

Eye Care Serum 3Gx10PCS

眼部护理精华素



A nourishing eye serum that energizes the delicate skin around your eyes to improve the look of fine lines, wrinkles, puffiness, and dark circles. Its firming and lifting effect will bring your eye a youthful radiance.

这款滋养眼部精华能为娇嫩的眼周肌肤注入活力，改善细纹、皱纹、浮肿和黑眼圈。其紧致提拉效果为眼部肌肤带来年轻的光彩。

Active Ingredients: Fucus Vesiculosus (Algae) Extract, Aesculus Hippocastanum (Horse Chestnut) Seed Extract, Laminaria Digitata Extract, Spirulina Maxima Extract, Porphyra Umbilicalis Extract, Ascophyllum Nodosum Extract, Aloe Barbadensis (Aloe Vera) Leaf Juice, Cucumis Sativus (Cucumber) Fruit Extract, Marine Collagen, Sodium Lactate, Sodium Hyaluronate, Acetyl Tetrapeptide-5, Sodium Acetylated Hyaluronate, ... etc

KSE27

Vitamins Serum 4Gx10PCS

辅酶精华素



Contains multi vitamins to energize and firm skin. It helps protect skin from harmful oxidative stress, reduce fine lines and wrinkles, and brighten your complexion.

含有多种维生素，能够为肌肤注入活力并紧致肌肤。帮助保护肌肤免受有害氧化压力，减少细纹和皱纹，提亮肤色。

Active Ingredients: Panthenol (Pro-vitamin B5), Niacinamide (Vitamin B3), Aloe Barbadensis (Aloe Vera) Leaf Juice, Tocopheryl Acetate (Vitamin E), Ascorbyl Tetraisopalmitate (Vitamin C), Retinyl Palmitate (Vitamin A), Hydroxydecyl Ubiquinone (Vitamin A), Hydroxydecyl Ubiquinone, ... etc

KSE28

Caviar Collagen Serum 4Gx10PCS

鱼卵胶原滋养精华素



Helps to improve skin elasticity and suppleness with deep moisture for a youthful appearance. It also helps in smoothening fine lines and wrinkles, leaving skin feeling plump and smooth.

帮助提升肌肤弹性和柔韧性，深层滋润，带来年轻的外观。还能够平滑细纹和皱纹，使肌肤感觉饱满光滑。

Active Ingredients: Caviar Extract, Marine Collagen, Panthenol (Pro-vitamin B5), Saccharide Isomerate, Aloe Barbadensis (Aloe Vera) Leaf Juice, Fucus Vesiculosus (Algae) Extract, Laminaria Digitata Extract, Spirulina Maxima Extract, Porphyra Umbilicalis Extract, Ascophyllum Nodosum Extract, Paullinia Cupana (Guarana) Seed Extract, Ilex Paraguariensis (Mate) Leaf Extract, Sodium Lactate, Hibiscus Syriacus Callus Extract, Orobanchae Rapum Extract, Bibola Leaf Extract, ... etc

KSE30

Purifying & Rebalancing Serum 4Gx10PCS

净肤精华素



Helps to balance, purify and clarify skin for a clearer complexion. It helps to control skin excessive oil while minimizing the appearance of pores.

帮助平衡、净化并澄清肌肤，打造更加清晰的肤色。有效控油，同时缩小毛孔，使肌肤更加细腻光滑。

Active Ingredients: Fomes Officinalis (Mushroom) Extract, Nasturtium Officinale Extract, Arctium Majus (Burdock) Root Extract, Salvia Officinalis (Sage) Leaf Extract, Citrus Medica Limonum (Lemon) Peel Extract, Hedera Helix (Ivy) Leaf Extract, Saponaria Officinalis Leaf/root Extract, Fucus Vesiculosus (Algae) Extract, Panthenol (Pro-vitamin B5), Aloe Barbadensis (Aloe Vera) Leaf Juice, Betaine, Zinc Lactate, Melaleuca Alternifolia (Tea Tree) Leaf Oil, Lavandula Angustifolia (Lavender) Oil, Sodium Hyaluronate, Nymphaea Caerulea Flower Extract, Hamamelis Virginiana (Witch Hazel) Leaf Extract, Nelumbo Nucifera Flower Extract, ... etc



BEAUTY COTTAGE®
PROFESSIONAL

KSE32

Oxygenating Serum 4Gx10PCS

多肽增氧精华素



Helps increase the oxygen level in skin and promote skin renewal to reveal glowing skin. It energizes tired skin to look smoother, brighter, and refined.

帮助提升肌肤的氧气水平，促进肌肤更新，展现光彩照人的肌肤。为疲惫的肌肤注入活力，使肌肤看起来更加光滑、明亮且细致。

Active Ingredients: Hydrolyzed Soy Protein, Aesculus Hippocastanum (Horse Chestnut) Extract, Cucumis Sativus (Cucumber) Fruit Extract, Panthenol (Pro-vitamin B5), Saccharide Isomerate, Aloe Barbadensis (Aloe Vera) Leaf Juice, Sodium PCA, Sodium Hyaluronate, Glycyrrhiza Glabra (Licorice) Root Extract, Camellia Sinensis (Green Tea) Leaf Extract, Nicotiana Benthamiana Hexapeptide-40 sh-Polypeptide-76, ... etc

KSE33

Anti-Wrinkles Serum 4Gx10PCS

抗皱精华素



Deeply nourishes to minimize the appearance of fine lines and wrinkles, helps firm and lift sagging skin for youthful and refined looking.

深层滋养肌肤，减少细纹和皱纹的显现，帮助紧致和提升松弛肌肤，展现年轻、细致的肤质。

Active Ingredients: Zea Mays (Corn) Leaf Extract, Cucumis Sativus (Cucumber) Fruit Extract, Saccharide Isomerate, Aloe Barbadensis (Aloe Vera) Leaf Juice, Sodium PCA, Sodium Lactate, Citrus Aurantium Dulcis (Orange) Callus Culture Extract, Sodium Hyaluronate, Ginkgo Biloba Leaf Extract, Pyrus Malus (Apple) Fruit Extract, Calendula Officinalis Flower Extract, Citrullus Vulgaris (Watermelon) Fruit Extract, Sodium PCA, Lens Esculenta Fruit Extract, Nicotiana Benthamiana, Hexapeptide-40, sh-Polypeptide-76, Acetyl Hexapeptide-1, ... etc

KSE34

Reviving Serum 4Gx10PCS

生长因子精华素



Helps replenish essential rich nutrients for the skin to stay hydrated and protected. It can help revitalize skin to restore overall healthy and brighter complexion.

帮助补充肌肤所需的丰富营养，保持肌肤滋润和保护。它还能促进肌肤恢复活力，恢复健康、明亮的肤色。

Active Ingredients: Caprylic/capric Triglyceride, Squalane, Panthenol (Pro-vitamin B5), Aesculus Hippocastanum (Horse Chestnut) Extract, Aloe Barbadensis (Aloe Vera) Leaf Juice, Saccharide Isomerate, Sh-oligopeptide-1, Sh-oligopeptide-2, Sh-polypeptide-1, Sh-polypeptide-9, Sh-polypeptide-11, Bacillus/soybean Ferment Extract, Tocopheryl Acetate, Sodium Hyaluronate, Ascorbyl Tetraisopalmitate, Simmondsia Chinensis Seed Oil, Hibiscus Syriacus Callus Extract, Lens Esculenta Fruit Extract, Sodium PCA, Citrullus Vulgaris (Watermelon) Fruit Extract, Pyrus Malus (Apple) Fruit Extract, Folic Acid, Calendula Officinalis Flower Extract, ... etc



USAGE: Apply the product gently onto cleansed face. Smoothen evenly. Avoid contact with eyes.

用法: 将精华素均匀涂敷于干净的面部。可与面膜和美容仪器同时使用效果更佳。





BEAUTY COTTAGE®
PROFESSIONAL

Face Series 11

Essence Solution 导入原液

KES01



4MLx10PCS

HA+NAG Solution (Deep Hydrating. Moisturizing)

HA+NAG导入原液 (深层保湿. 滋润)

This expertly crafted formula combines Hyaluronic Acids and N-Acetyl Glucosamine to deeply hydrate and revitalize dry, flaky skin. While various forms of Hyaluronic Acid restore moisture, Acetyl Glucosamine supports smoother and more even skin, enhancing hydration. A complexion that exudes natural skin radiance, making this solution a skincare essential for intense hydration and moisturizing.

结合了透明质酸和N-乙酰氨基葡萄糖, 深层滋润并恢复干燥、起皮的肌肤。不同的透明质酸能够补充水分, 而乙酰氨基葡萄糖则帮助平滑肌肤, 提升肤色均匀性, 增强水合作用。令肌肤散发自然光彩, 是深层补水和滋润的护肤必备良品。

Active Ingredients: Hydrolyzed Sodium Hyaronate, Acetyl Glucosamine, Sodium Acetylated Hyaluronate, Sodium Hyaronate, Panthenol (Pro Vitamin B5), Sodium Hyaluronate Crosspolymer, Betaine, Aloe Barbadensis (Aloe Vera) Leaf Juice, Saccharide Isomerate, Arginine, Sodium Polyglutamate, Cucumis Sativus (Cucumber) Fruit Extract, ... etc

KES02



4MLx10PCS

Centella + Portulaca Solution (Soothing. Hydrating)

积雪草+马齿苋导入原液 (舒缓. 保湿)

This unique blend features calming Centella Asiatica and Portulaca Oleracea extracts, along with other potent ingredients. It soothes, calms and luxury of smooth, rejuvenated skin. Unleash your skin's potential with each drop of our carefully crafted solution.

融合了具有舒缓功效的积雪草和马齿苋提取物, 以及其他强效成分。它能舒缓、镇静肌肤, 带来奢华的光滑和焕活的肌肤。每一滴精心调配的配方都能释放肌肤的潜力。

Active Ingredients: Centella Asiatica Extract, Portulaca Oleracea Extract, Panthenol (Pro-Vitamin B5), Aloe Barbadensis (Aloe Vera) Leaf Juice, Sodium Hyaluronate, Asiatic Acid, Cucumis Sativus (Cucumber) Fruit Extract, Asiaticoside, Betaine, Madecassic Acid, ... etc

KES03



4MLx10PCS

Ceramide Solution (Rejuvenating. Repairing)

神经酰胺导入原液 (焕肤. 修复)

This expertly crafted blend floods your skin with revitalization, locking in hydration for a radiant, age-defying glow. Experience the luxury of every application as delivers a lavish infusion of moisture and nutrients, nurturing a complexion that is truly rejuvenated and exudes time-less vibrancy.

为肌肤注入焕活能量, 锁住水分, 赋予肌肤光彩照人的抗衰老光泽。每次使用都带来奢华的水分和营养滋养, 呵护您的肌肤, 让肌肤焕发年轻光彩, 散发永恒的活力。

Active Ingredients: Squalane, Ceramide NP, Plukenetia Volubilis Seed Oil, Ceramide EOP, Olea Europaea (Olive) Fruit Oil, Betaine, Ceramide AP, Glycyrrhiza Glabra (Licorice) Root Extract, Tocopherol, Chamomilla Recutita (Matricaria) Flower Extract, Panthenol, Aesculus Hippocastanum (Horse Chestnut) Extract, Olea Europaea (Olive) Husk Oil, Euterpe Oleracea Fruit Extract, Cucumis Sativus (Cucumber) Fruit Extract, Sodium Hyaluronate, ... etc

KES04



4MLx10PCS

Peptides Solution (Anti-Wrinkle. Firming)

肽导入原液 (抗皱. 紧致)

Crafted for mature skin, this solution reveals smoother, firmer skin, delaying signs of premature aging. It improves skin texture and provides essential hydration, restoring natural suppleness for a refreshed appearance.

为成熟肌肤精心打造, 展现更加平滑紧致的肌肤, 延缓早衰迹象。它改善肌肤纹理, 提供必需的水分, 恢复自然的柔韧性, 令肌肤焕发清新光彩。

Active Ingredients: Spirulina Maxima Extract, Porphyra Umbilicalis Extract, Paullinia Cupana (Guarana) Seed Extract, Copper Tripeptide-1, Ascophyllum Nodosum Extract, Panthenol, Fucus Vesiculosus (Algae) Extract, Aloe Barbadensis (Aloe Vera) Leaf Juice, Acteyl Hexapeptide-1, Oligopeptide-3, Laminaria Digitata Extract, Arginine, Oligopeptide-1, Oligopeptide-2, Bacillus/Soybean Ferment Extract, Hexapeptide-11, Hydrolyzed DNA, Hydrolyzed RNA, Sodium Acetylated Hyaluronate, ... etc



BEAUTY COTTAGE®
PROFESSIONAL

KES05



4MLx10PCS

Retinoid Solution (Brightening. Anti-Aging)

维生素A醇导入原液 (美白. 抗衰老)

Designed to combat signs of aging, this solution works to improve the texture and appearance of your skin, revitalizing your complexion for a confident, refreshed look. Experience the transformative power of targeted skin rejuvenation and achieve a flawless, revitalized complexion.

专为抗衰老设计，致力于改善肌肤质地和外观，焕活肤色，展现自信、焕然一新的容颜。体验精准肌肤焕新的变革力量，打造无瑕、焕发活力的肌肤。

Active Ingredients: Squalane, Simmondsia Chinensis Seed Oil, Hydroxypinacolone Retinoate, Myrtus Communis Leaf Extract, Olea Europaea (Olive) Fruit Oil, Olea Europaea (Olive) Leaf Extract, Ascorbyl Tetraisopalmitate (Vitamin C), ... etc

KES06



4MLx10PCS

SA Solution (Acne. Anti-Blemish)

SA导入原液 (祛痘. 抗瑕疵)

Specialized solution for oily, blemish and acne-prone skin. With the key ingredient Salicylic Acid, this solution exfoliates and unclogs pores, supporting a healthier complexion. A synergistic blend of botanicals, including Witch Hazel, Lotus Flower and Blue Lotus Flower Extracts, soothes, and helps maintain a clearer complexion. With added benefits of Aloe Vera, this solution promotes a smoother, blemish-free appearance, revealing your skin's natural clarity.

专为油性、易长痘和痘痘肌肤设计。核心成分水杨酸能够去角质并疏通毛孔，帮助改善肤质，展现更健康的肤色。植物精华的协同作用，包括金缕梅、莲花和蓝莲花提取物，能舒缓肌肤，并帮助维持清透的肤质。添加的芦荟成分进一步促进肌肤平滑，帮助改善瑕疵，展现肌肤自然的清透光彩。

Active Ingredients: Salicylic Acid, Hamamelis Virginiana (Witch Hazel) Leaf Extract, Panthenol (Pro-Vitamin B5), Nelumbo Nucifera Flower Extract, Aloe Barbadensis (Aloe Vera) Leaf Juice, Nymphaea Caerulea Flower Extract, Melaleuca Alternifolia (Tea Tree) Leaf Oil, ... etc

KES07



4MLx10PCS

Burdock + Algae Solution (Oil Control. Rebalancing)

牛蒡 + 藻类导入原液 (控油. 平衡修护)

Meticulously crafted to purify, rebalance, and restore skin's balance, this solution reconditioning skin, aiding its return to normal from oily conditions. Enriched with Arctium Majus (Burdock) Root Extract, it effortlessly refines, while Fucus Vesiculosus (Algae) Extract, unveil luminosity. Elevate your skincare ritual and embrace the journey to harmonized skin.

精心打造，旨在净化、平衡并恢复肌肤的自然状态，帮助肌肤从油腻状态恢复至正常水平。富含牛蒡根提取物，有效细致肌肤，而海藻提取物则为肌肤带来明亮光泽。提升您的护肤体验，迈向肌肤和谐之旅。

Active Ingredients: Arctium Majus (Burdock) Root Extract, Salvia Officinalis (Sage) Leaf Extract, Nasturtium Officinale Extract, Citrus Limon (Lemon) Peel Extract, Saponaria Officinalis Leaf/Root Extract, Fucus Vesiculosus (Algae) Extract, Chlorella Vulgaris Extract, Hedera Helix (Ivy) Leaf Extract, Panthenol (Pro-Vitamin B5), Hamamelis Virginiana (Witch Hazel) Leaf Extract, ... etc

KES08



4MLx10PCS

AHA Solution (Renewing. Glowing)

AHA 导入原液 (焕新. 亮肤)

This solution gently exfoliates using Glycolic and Lactic Acid and other types of AHAs, refine your skin texture. Natural extracts further enhance your complexion's brightness and protection. Experience improved skin texture and a revitalized appearance.

温和地通过果酸和乳酸及其他类型的AHA去除角质，细致肌肤纹理。天然植物提取物进一步提升肌肤的亮度与保护力。体验更加平滑的肤质和焕发活力的容颜。

Active Ingredients: Glycolic Acid, Lactic Acid, Citric Acid, Malic Acid, Tartaric Acid, Vaccinium Myrtillus (Bilberry) Fruit Extract, Saccharum Officinarum (Sugar Cane) Extract, Citrus Aurantium Dulcis (Orange) Fruit Extract, Citrus Media Limonum (Lemon) Fruit Extract, Acer Saccharum (Sugar Maple) Extract, Panthenol (Pro-Vitamin B5), Boerhavia Diffusa Root Extract, Aloe Barbadensis (Aloe Vera) Leaf Juice, Sodium Hyaluronate, ... etc



BEAUTY COTTAGE®
PROFESSIONAL

KES09



4MLx10PCS

VC + L-GSH Solution (Lightening. Whitening) VC + L-GSH导入原液 (美白. 亮肤)

This remarkable solution, enhanced with Glutathione, designed to lighten, and brighten skin. It incorporates Niacinamide for skin refinement and Acetyl Glucosamine to encourage smooth and well-hydrated skin. Antioxidants provide protection against oxidative stress, while Ascorbic Acid illuminates and brightens the complexion. Enriched with calming components, this solution nurtures a serene and radiant complexion.

富含谷胱甘肽，旨在提亮肤色，焕发肌肤光采。融合了烟酰胺，有效细致肌肤，并加入乙酰氨基葡萄糖，帮助促进肌肤平滑与保持水润。抗氧化成分有效抵御氧化压力，同时维生素C为肌肤带来明亮光泽。配方中还含有舒缓成分，滋养肌肤，打造宁静、焕亮的肤色。

Active Ingredients: Niacinamide, Acetyl Glucosamine, Tricholoma Matsutake Extract, Pyrus Malus (Apple) Fruit Extract, Camellia Japonica Leaf Extract, Panthenol (Pro-Vitamin B5), Betaine, Camellia Sinensis Leaf Extract, Ascorbic Acid, Glutathione, Broussonetia Kazinoki Root Extract, Boerhavia Diffusa Root Extract, Centella Asiatica Extract, Aloe Barbadensis (Aloe Vera) Leaf Juice, Morus Alba Bark Extract, ... etc

KES10



4MLx10PCS

Fullerene Solution (Antioxidant. Oxygenating) 富勒烯导入原液 (抗氧化. 促氧)

Fullerene provide defence against unfriendly environmental factors, preserving your skin's youthful appearance, while Hyaluronic Acid enhances fullness and revitalizes your complexion. Embrace the glow of resilient and radiant skin.

为肌肤提供防护，抵御不良环境因素，保持肌肤年轻状态，同时透明质酸增强肌肤饱满度，焕活肤色。让您拥抱充满韧性与光彩的肌肤。

Active Ingredients: Fullerenes, Panthenol, Camellia Sinensis (Green Tea) Leaf Extract, Ginkgo Biloba Leaf Extract, Acetyl Tetrapeptide-2, Aloe Barbadensis (Aloe Vera) Leaf Juice, Arginine, Tocopheryl Acetate (Vitamin E), Sodium Hyaluronate, ... etc

KES11



4MLx10PCS

Squalane Solution (SOS. Calming. Repairing) 角鲨烷导入原液 (急救. 舒缓. 修复)

This formula contains Squalane from sugarcane, a potent moisturizing emollient that restores skin suppleness by reducing water loss. It serves as an SOS solution for skin, soothe skin uncomfortable conditions, while providing repair, antioxidants, deep hydration, calming, smoothing, brightening and a refreshed, healthier look for your skin.

含有来自甘蔗的角鲨烷，一种强效的保湿润肤剂，能通过减少水分流失恢复肌肤的柔软性。它作为肌肤的紧急救援方案，舒缓不适肌肤，同时提供修复、抗氧化、深层补水、镇静、平滑、亮肤等功效，让您的肌肤焕发清新、健康的光采。

Active Ingredients: Squalane, Olea Europaea (Olive) Husk Oil, Brassica Campestris (Rapeseed) Seed Oil, Camellina Sativa Seed Oil, Tocopheryl Acetate (Vitamin E), Simmondsia Chinensis Seed Oil, Opuntia Ficus-Indica Flower Extract, ... etc

KES12



4MLx10PCS

W-Truffle + MP Solution (Eye Anti-Aging. Dark Circle. Puffiness) 白松露 + 多肽导入原液 (眼部抗衰老. 黑眼圈. 浮肿)

An expertly crafted, multi-peptide-infused eye care solution. Its potent formula targets crow's feet, dark circles, and puffiness, leaving your eyes looking rejuvenated and revitalized.

采用强效配方，专门针对鱼尾纹、黑眼圈和眼部浮肿，让您的双眼焕发年轻活力，重现神采奕奕。

Active Ingredients: Tuber Magnatum Extract, Paullinia Cupana (Guarana) Fruit Extract, Acetyl Glutamine, Oligopeptide-1, Oligopeptide-2, Hexapeptide-11, Oligopeptide-3, Aloe Barbadensis (Aloe Vera) Leaf Juice, Bacillus / Soybean Ferment Extract, Cucumis Sativus (Cucumber) Fruit Extract, Sodium Hyaluronate, Hydrolyzed Collagen (Marine), ... etc



BEAUTY COTTAGE®
PROFESSIONAL

Face Series 12

Freeze-dried Powder 冻干粉

KDP01



Powder: 100mg x5
Solution: 4ml x 5pcs

Glutathione Freeze-dried Powder + VC + L-GSH Solution (Lightening & Spot Reduction)

谷胱甘肽冻干粉 + VC+L-GSH 导入原液(亮白淡斑)

A powerful antioxidant treatment designed to brighten and rejuvenate skin, reduce fine lines, even out skin tone, and provide effective lightening and spot reduction.

强效抗氧化护理，旨在提亮和恢复肌肤活力，减少细纹，均匀肤色，并有效美白和淡化斑点。

Active Ingredients: Glutathione, Oligopeptide-1, ... etc

KDP02



Powder: 100mg x5
Solution: 4ml x 5pcs

Astaxanthin Freeze-dried Powder + AHA Solution (Renewing & Brightening)

虾青素冻干粉 + AHA导入原液(亮肌焕活)

A powerful treatment that renews and brightens skin, reducing dullness, evening out skin tone, and smoothing fine lines for a radiant complexion.

强效护理，焕新并提亮肌肤，减少暗沉，均匀肤色，抚平细纹，打造光彩照人的肤色。

Active Ingredients: Haematococcus Pluvialis Extract, Sodium Ascorbate, Astaxanthin, Ascorbic Acid, Glycerin, Tocopherol, Oligopeptide-1, Sodium Hyaluronate, ... etc

KDP03



Powder: 100mg x5
Solution: 4ml x 5pcs

Oligopeptide Freeze-dried Powder + SA Solution (Smoothen & Fade Blemishes)

寡肽冻干粉+SA导入原液(平滑细致祛印)

A smoothen, and fade blemishes treatment designed to repair and reduce the appearance of acne marks, improve skin texture, and tighten pores.

平滑肌肤、淡化瑕疵的护理，旨在修复和减少痘痕的出现，改善皮肤质地，收紧毛孔。

Active Ingredients: Oligopeptide-1, Trehalose, Aloe Barbadensis Leaf Juice, Serum Albumin, Sodium Hyaluronate, ... etc

KDP04



Powder: 100mg x5
Solution: 4ml x 5pcs

Copper Peptide Freeze-dried Powder + Fullerene Solution (Anti-Wrinkle & Firming)

铜肽冻干粉+富勒烯导入原液(抗皱冻龄)

A potent anti-wrinkle and firming treatment designed to smooth fine lines and enhance skin's elasticity.

强效抗皱紧致护理，旨在抚平细纹，增强皮肤弹性。

Active Ingredients: Copper Tripeptide-1, Oligopeptide-1, Sodium Hyaluronate, ... etc



BEAUTY COTTAGE®
PROFESSIONAL

KDP05



Powder: 100mg x5
Solution: 4ml x 5pcs

Sodium Polyaspartate Freeze-dried Powder + Centella + Portulaca Solution (Hydrating & Repairing) 聚天冬氨酸钠冻干粉 + 积雪草+马齿苋导入原液（补水修护）

A deeply hydrating and repairing treatment that smooths, revitalizes, and reduces fine lines. It helps restore sensitive skin while protecting against environmental stress, leaving your complexion balanced and refreshed.

深层补水修护护理，能抚平肌肤，恢复活力，减少细纹。它帮助修复敏感肌肤，同时保护皮肤免受环境压力，令肤色保持平衡，焕发清新光彩。

Active Ingredients: Sodium Polyaspartate, Trehalose, Sodium Hyaluronate, Oligopeptide-1, Palmitoyl Tetrapeptide-7, ... etc

USAGE: Open the cap. Add the solution to the powder slowly with the drip dropper, close and shake until fully blended. Apply evenly to your skin until absorbed.

用法: 打开瓶盖。使用滴管慢慢将溶液加入粉末中。盖上瓶盖并摇晃直至完全混合。均匀涂抹在皮肤上直至吸收。

Face Series 13

Gel Mask 凝胶面膜

KGM01A (1000g)



Overnight Mask
可过夜面膜

Gel Mask & Moisturizer – Lightening & Moisturizing 美白润肤凝胶面膜

Helps lighten and even skin tone. Fight against skin dark spots. Provide moisturizing and hydrating to skin.

帮助提亮肤色，均匀肤色，抗击暗斑。为肌肤提供滋润和补水。

Active Ingredients: Glycerin, Niacinamide, Acetyl Glucosamine, Broussonetia Kazinoki Root Extract, Morus Alba Bark Extract, Pyrus Malus (Apple) Fruit Extract, Camellia Japonica Leaf Extract, Camellia Sinensis Leaf Extract, Centella Asiatica Extract, Tricholoma Matsutake Extract, Cucumis Sativus (Cucumber) Fruit Extract, Panthenol (Pro-vitamin B5), Aloe Barbadensis (Aloe Vera) Leaf Juice, Sodium Hyaluronate, ... etc

KGM02A (1000g)



Overnight Mask
可过夜面膜

Gel Mask – Purifying & Balancing 净化平衡凝胶面膜

Reduce excessive skin sebum. Purify and refine skin texture. Minimize enlarged skin pores. Help control skin blemishes.

减少多余的皮脂，净化并改善肤质，收缩毛孔，帮助控制肌肤瑕疵。

Active Ingredients: Nasturtium Officinale Extract, Arctium Majus (Burdock) Root Extract, Salvia Officinalis (Sage) Leaf Extract, Citrus Limon (Lemon) Peel Extract, Hedera Helix (Ivy) Leaf Extract, Saponaria Officinalis Leaf/root Extract, Fucus Vesiculosus (Algae) Extract, Hamamelis Virginiana (Witch Hazel) Leaf Extract, Panthenol (Pro-vitamin B5), Niacinamide (Vitamin B3), Aloe Barbadensis (Aloe Vera) Leaf Juice, Melaleuca Alternifolia (Tea Tree) Leaf Oil, ... etc



BEAUTY COTTAGE®
PROFESSIONAL

KGM03A (1000g)



Overnight Mask
可过夜面膜

Gel Mask – Calming & Hydrating 舒缓保湿凝胶面膜

Help calm down skin uncomfortable conditions. Smoothen and soften the skin texture. Provide moisturizing and hydrating to skin as well.

帮助缓解皮肤不适，平滑和柔软皮肤质地，同时提供保湿和滋润。

Active Ingredients: Nasturtium Officinale Extract, Arctium Majus (Burdock) Root Extract, Salvia Officinalis (Sage) Leaf Extract, Citrus Limon (Lemon) Peel Extract, Hedera Helix (Ivy) Leaf Extract, Saponaria Officinalis Leaf/root Extract, Fucus Vesiculosus (Algae) Extract, Hamamelis Virginiana (Witch Hazel) Leaf Extract, Panthenol (Pro-vitamin B5), Niacinamide (Vitamin B3), Aloe Barbadensis (Aloe Vera) Leaf Juice, Melaleuca Alternifolia (Tea Tree) Leaf Oil, ... etc

KGM04A (1000g)



Gel Mask – Lifting & Moisturizing 结实紧肤凝胶面膜

Improve skin suppleness, firmness, and elasticity. Reduce appearance of fine lines and wrinkles. Tighten and uplift sagged skin.

改善皮肤的柔韧性、紧致度和弹性。减少细纹和皱纹的出现。紧致并提升松弛的皮肤。

Active Ingredients: Nasturtium Officinale Extract, Arctium Majus (Burdock) Root Extract, Salvia Officinalis (Sage) Leaf Extract, Citrus Limon (Lemon) Peel Extract, Hedera Helix (Ivy) Leaf Extract, Saponaria Officinalis Leaf/root Extract, Fucus Vesiculosus (Algae) Extract, Hamamelis Virginiana (Witch Hazel) Leaf Extract, Panthenol (Pro-vitamin B5), Niacinamide (Vitamin B3), Aloe Barbadensis (Aloe Vera) Leaf Juice, Melaleuca Alternifolia (Tea Tree) Leaf Oil, ... etc



USAGE: Apply the mask onto cleansed face and neck with a thin layer for 20-30 minutes, then gently wash off thoroughly.
用法: 洁面后，将产品涂抹于脸部和颈部，静待20-30分钟后洗净即可。(除KGM04A外)

Face Series 14

Cream Mask
面膜膏

KCK01 (500g)



Cream Mask & Intensive Moisturizer 美白滋润面膜膏

Provide moisturizing and softening to skin. Smoothen and refine skin complexion. Help improve skin suppleness, firmness, and elasticity. Lighten, brighten, and even skin tone. Help reduce dark spots.

为皮肤提供滋润和柔软。平滑并改善肤色。帮助改善皮肤的柔韧性、紧致度和弹性。提亮肤色，均匀肤色。帮助减少黑斑。

Active Ingredients: Panthenol (Pro-vitamin B5), Niacinamide (Vitamin B3), Acetyl Glucosamine, Broussonetia Kazinoki Root Extract, Morus Alba Bark Extract, Pyrus Malus (Apple) Fruit Extract, Camellia Japonica Leaf Extract, Camellia Sinensis Leaf Extract, Centella Asiatica Extract, Galactoarabinan, Tricholoma Matsutake Extract, Sodium Lactate, Aloe Barbadensis (Aloe Vera) Leaf Juice, Sodium Pca, Cucumis Sativus (Cucumber) Fruit Extract, Tocopheryl Acetate (Vitamin E), Sodium Hyaluronate, Dimethylmethoxy Chromanyl Palmitate, ... etc



BEAUTY COTTAGE®
PROFESSIONAL

Face Series 15

Sheet Mask 面膜

KSM01A



Milk White Moisturizing Brightening Facial Mask 10 IN 1 牛奶美白滋润湿布面膜

Help brighten and even skin tone. Deep moisturizing, nourishing and softening skin texture. Help smooth out skin fine lines and wrinkles. Leave to you a fairer and radiant skin looking instantly. Suitable for drying normal skin.

帮助提亮并均匀肤色。深层滋润、滋养并柔软肌肤质地。帮助平滑细纹和皱纹。让您的肌肤瞬间焕发光彩，显得更加白皙透亮。适合干性和中性皮肤。

Active Ingredients: Aloe Barbadensis (Aloe Vera) Leaf Juice, Marine Collagen, Tocopheryl Acetate (Vitamin E), Panthenol (Pro-vitamin B5), Niacinamide (Vitamin B3), Sodium Hyaluronate, Cucumis Sativus (Cucumber) Fruit Extract, ... etc

KSM03A



Aloe Vera Hydrating Calming Facial Mask 10 IN 1 芦荟舒缓湿布面膜

Calm down skin uncomfortable conditions. Smoothen and soften the skin texture. Provide moisturizing and hydrating to skin. All skin types.

舒缓皮肤不适。平滑并柔软肌肤质地。为皮肤提供滋润和保湿。适合所有肤质。

Active Ingredients: Panthenol (Pro-vitamin B5), Aloe Barbadensis (Aloe Vera) Leaf Juice, Chamomilla Recutita (Matricaria) Flower Extract, Aesculus Hippocastanum (Horse Chestnut) Seed Extract, Glycyrrhiza Glabra (Licorice) Root Extract, Cucumis Sativus (Cucumber) Fruit Extract, Marine Collagen, Alpha-bisabolol, Sodium Hyaluronate, ... etc

KSM04



Vitamin C Lightening Hydrating Facial Mask 10 IN 1 维他命C美白滋润湿布面膜

Provide lightening and hydrating to skin. Help reduce skin dark spots. Increase skin moisture level and suppleness. Antioxidant and anti-wrinkles as well. All skin types.

为皮肤提供提亮和保湿。帮助减少皮肤黑斑。增加皮肤的水分和柔韧性。同时具有抗氧化和抗皱效果。适合所有肤质。

Active Ingredients: Niacinamide, Acetyl Glucosamine, Broussonetia Kazinoki Root Extract, Morus Alba Bark Extract, Pyrus Malus (Apple) Fruit Extract, Camellia Japonica Leaf Extract, Camellia Sinensis Leaf Extract, Centella Asiatica Extract, Galactoolarabinan, Tricholoma Matsutake Extract, Sodium PCA, Panthenol (Pro-vitamin B5), Spirulina Maxima Extract, Fucus Vesiculosus Extract, Laminaria Digitata Extract, Porphyra Umbilicalis Extract, Ascophyllum Nodosum Extract, Aloe Barbadensis (Aloe Vera) Leaf Juice, Marine Collagen, Sodium Ascorbyl Phosphate, Sodium Hyaluronate, ... etc

KBSM01



Charcoal Purifying Balancing Facial Mask 10 IN 1 活性炭净化平衡湿布面膜

Help minimize the enlarged skin pores and blemishes. Purify and refine skin texture. Improve oily skin conditions and provide hydrating. Keep the smoothness and softness to the skin. Suitable for oily, acne skin.

帮助缩小毛孔和瑕疵。净化并改善肌肤质地。改善油性肌肤状况并提供滋润。保持肌肤的光滑和柔软。适合油性和痘痘肌肤。

Active Ingredients: Hamamelis Virginiana (Witch Hazel) Leaf Extract, Sodium Lactate, Panthenol (Pro-vitamin B5), Nasturtium Officinale Extract, Arctium Majus (Burdock) Root Extract, Salvia Officinalis (Sage) Leaf Extract, Citrus Medica Limonum (Lemon) Peel Extract, ... etc



USAGE: Before mask, wash your face and dry the face. Close your eyes, put the sheet mask on the face or eyes and press gently to close the skin. Let the mask stays at your face/eyes at least 30 minutes or longer.

用法: 脸部清洁后，将面膜贴于面部或眼睛。待30分钟或更久。



BEAUTY COTTAGE®
PROFESSIONAL

KSM11

Hydrating Brightening Firming Eye Mask 10 IN 1 眼睛湿布面膜



Moisturizing and rehydrating eye skin. Help smooth out fine lines and firm the skin. Keep elasticity and suppleness to skin. Help to reduce eye puffiness, dark circles as well as eye bags.

滋润并重新补水眼部肌肤。帮助平滑细纹并紧致肌肤。保持皮肤的弹性和柔韧性。帮助减少眼部浮肿、黑眼圈和眼袋。

Active Ingredients: Glycerin, Marine Collagen, Niacinamide (Vitamin B3), Acetyl Glucosamine, Broussonetia Kazinoki Root Extract, Morus Alba Bark Extract, Pyrus Malus (Apple) Fruit Extract, Camellia Japonica Leaf Extract, Camellia Sinensis Leaf Extract, Centella Asiatica Extract, Galactoarabinan, Tricholoma Matsutake Extract, Panthenol (Pro-vitamin B5), Sodium PCA, Sodium Lactate, Fucus Vesiculosus (Algae) Extract, Laminaria Digitata Extract, Spirulina Maxima Extract, Porphyra Umbilicalis Extract, Ascophyllum Nodosum Extract, Aloe Barbadensis (Aloe Vera) Leaf Juice, Sodium Hyaluronate, Camellia Sinensis (Green Tea) Leaf Extract, Cucumis Sativus (Cucumber) Fruit Extract, ... etc



USAGE: Before mask, wash your face and dry the face. Close your eyes, put the sheet mask on the face or eyes and press gently to close the skin. Let the mask stays at your face/eyes at least 30 minutes or longer.

用法：脸部清洁后，将面膜贴于面部或眼睛。待30分钟或更久。

K3DM02A

Shaping Firming Hydrating V-Shape Facial Mask 8 IN 1 紧实、保湿与结实V型湿布面膜



Provide up lifting, hydrating, and repairing to skin. Help firm the face figure. Improve skin suppleness and elasticity. Smooth skin fine lines and wrinkles.

提供提拉、保湿和修复肌肤的功效。帮助紧致面部轮廓。改善皮肤的柔韧性和弹性。平滑肌肤细纹和皱纹。

Active Ingredients: Betaine, Avena Sativa (Oat) Kernel Extract, Paullinia Cupana (Guarana) Fruit Extract, Spirulina Maxima Extract, Fucus Vesiculosus Extract, Laminaria Digitata Extract, Porphyra Umbilicalis Extract, Ascophyllum Nodosum Extract, Cucumis Sativus (Cucumber) Fruit Extract, Marine Collagen, Panthenol (Pro-vitamin B5), Aloe Barbadensis (Aloe Vera), ... etc



USAGE: Before mask, wash your face and dry the face. Stretch both of the opening in the bottom of the mask until it reaches the ear and wraps it around the ear area. Let the mask stays at your face at least 30 minutes or overnight. Remove the mask, massage face gently with the extra mask serum.

用法：清洁及擦干面部，将面膜片底部的两边开口拉至耳朵挂上，待30分钟或过夜，取下面膜。用面膜的余下精华液轻轻按摩脸部让它吸收。

Face Series 16

Hydro Booster Crystal Peel Off Mask 晶粉冰膜

KPM58 (1000g)

Lavender Calming Hydro Booster Crystal Peel Off Mask 薰衣草舒缓水晶面膜



Enriched with Lavender to balance sebum, calming and reduce appearance of scars with its soothing properties. Added with hydrating Hyaluronic acid to lock in moisture for long lasting with a hint of cooling sensation while leaving skin healthier and balanced.

富含薰衣草，能够平衡皮脂，舒缓肌肤并减少疤痕的出现。添加了保湿的透明质酸，锁住水分，持久保湿，同时带有一丝清凉感，使肌肤更加健康和平衡。

Active Ingredients: Lavandula Angustifolia (Lavender) Flower, Sodium Hyaluronate, ... etcSodium Hyaluronate, Dimethylmethoxy Chromanyl Palmitate, ... etc



BEAUTY COTTAGE®
PROFESSIONAL

KPM56 (1000g)



Golden Chamomile Moisturizing Hydro Booster Crystal Peel Off Mask 洋甘菊保湿水晶面膜

Enriched with Chamomile to balance sebum, comfortably calm skin. Added with anti-aging and hydrating Hyaluronic acid to lock in moisture for long lasting with a hint of cooling sensation while leaving skin replenished and softer.

富含洋甘菊，能够平衡皮脂，舒适地镇静肌肤。添加了抗衰老和保湿的透明质酸，锁住水分，持久保湿，同时带有一丝清凉感，使肌肤得到滋养，变得更加柔软。

Active Ingredients: Chrysanthellum Indicum Extract, Sodium Hyaluronate, ... etc

KPM57 (1000g)



Kiwi Brightening Hydro Booster Crystal Peel Off Mask 奇异果美白水晶面膜

Enriched with antioxidant Kiwi to nourish, gently exfoliate, tighten, and minimize open pore for a brighter and flawless skin. Added with anti-aging and hydrating Hyaluronic acid to lock in moisture for long lasting with a hint of cooling sensation while leaving skin smoother and revived.

富含抗氧化的猕猴桃，能够滋养肌肤，温和去角质，紧致并缩小毛孔，使肌肤更加明亮无瑕。添加了抗衰老和保湿的透明质酸，锁住水分，持久保湿，同时带有一丝清凉感，使肌肤更加光滑，焕发活力。

Active Ingredients: Sargassum Pallidum Extract, Actinidia Chinensis (Kiwi) Fruit Extract, Sodium Hyaluronate, ... etc

KPM55 (1000g)



Calendula Firming Hydro Booster Crystal Peel Off Mask 金盏花紧致水晶面膜

Enriched with calming Calendula to gently exfoliate dead skin cells while enhancing elasticity for radiant and dewy-fresh. Added with anti-aging and hydrating Hyaluronic acid to lock in moisture for long lasting with a hint of cooling sensation while leaving skin firmer and suppler.

富含舒缓的金盏花，温和去除死皮细胞，同时增强皮肤弹性，使肌肤焕发光彩，水润清新。添加了抗衰老和保湿的透明质酸，锁住水分，持久保湿，同时带有一丝清凉感，使肌肤更加紧致和柔韧。

Active Ingredients: Calendula Officinalis Flower, Sodium Hyaluronate, ... etc

KPM50 (1000g)



Rose Anti-Wrinkles & Lifting Hydro Booster Crystal Peel Off Mask 玫瑰抗皱水晶面膜

Enriched with real rose petals that gently soothes and hydrates the skin while providing a plumping effect. Instantly claim skin with a cooling sensation, leaving skin softer, smoother, brighter and remains moisturized.

富含真实的玫瑰花瓣，温和舒缓并滋润肌肤，同时提供丰盈效果。瞬间为肌肤带来清凉感，使肌肤更加柔软、光滑、明亮，并保持长时间的滋润

Active Ingredients: Sodium Hyaluronate, Rosa Centifolia (Rose) Flower, ... etc



USAGE: Mix the mask powder with water with a ratio of 1:1 (powder 25~30gm : water 50~60gm). Stir quickly until blend well. Apply a thin layer of 1-3mm mask on face or body. Leave on for 20-30 minutes then peel off.

用法: 将（晶粉冰膜与水）按1比1的体积比例，搅拌均匀。无需速快搅拌。涂敷于面颈部或身体，呈1-3mm薄层，待20-30分钟后，将揭除面膜。



BEAUTY COTTAGE®
PROFESSIONAL

Face Series 17

Soft Peel Off Powder Mask 软粉面膜

KPM31
(500g)



KPM33
(1000g)



Gold Soft Powder Mask (I & II) 纯金软粉面膜 (I & II)

Provide moisturizing & brightening to skin. Promote skin rejuvenating, suppleness, and elasticity. Help reduce wrinkles and fine lines. Leave you a smooth and fair complexion. All skin types.

为肌肤提供滋润与亮肤效果。促进肌肤焕新，增加柔韧性和弹性。帮助减少皱纹和细纹。让您拥有光滑、白皙的肤色。适合所有肤质。

Active Ingredients: Bentonite, Gold, ... etc

KPM32 (1000g)



Black Gold Soft Powder Mask 黑金软粉面膜

Remove skin impurities from skin surface. Absorb skin excess sebum and provide deep cleansing to skin pores. Lighten skin tone and help purify skin blemishes. Suitable for oily skin.

去除肌肤表面的杂质，吸附多余的皮脂，为肌肤毛孔提供深层清洁。提亮肤色，帮助净化肌肤瑕疵。适合油性肌肤。

Active Ingredients: Charcoal Powder, Gold, ... etc

KPM01 (1000g)



Black Mud Charcoal Soft Powder Mask 黑海泥活性炭软粉面

Deep clean skin. Remove excess dead skin cells. Promote skin natural renewal. Lightening skin, reduce skin spots and darkness. Hydrating & Moisturizing. All skin types.

深层清洁肌肤，去除多余的死皮细胞，促进肌肤自然更新。提亮肤色，减少肌肤斑点和暗沉。滋润和保湿。适合所有肤质。

Active Ingredients: Charcoal Powder Mud, ... etc

KPM02 (1000g)



Grey Mud Soft Powder Mask 灰泥软粉面膜

Rich in minerals which help calm down uncomfortable skin conditions, stabilize skin pH level. Deep clean skin and clear skin pores. Suitable for all skin types.

富含矿物质，帮助舒缓不适的肌肤状况，稳定皮肤的 pH 值。深层清洁肌肤，疏通毛孔。适合所有肤质。

Active Ingredients: Salt Mine Mud, ... etc

KPM04 (1000g)



Pearl & Milk Soft Powder Mask 珍珠牛奶软粉面膜

Provide moisturizing, nourishing, and lightening to skin. Leave you a smooth and fair complexion. All skin types.

为肌肤提供滋润、滋养和亮肤效果。让您拥有光滑、白皙的肤色。适合所有肤质。

Active Ingredients: Pearl Powder, Nonfat Dry Milk, ... etc



BEAUTY COTTAGE®
PROFESSIONAL

KPM05 (1000g)



Vitamin C Soft Powder Mask
维他命C软粉面膜

Provide lightening and hydrating to skin. Increase skin moisture level and antioxidant. All skin types.

为肌肤提供亮肤和保湿效果。增加皮肤的水分含量和抗氧化力。适合所有肤质。

Active Ingredients: Sodium Ascorbyl Phosphate, ... etc

KPM06 (1000g)



Aloe Vera & Cucumber Soft Powder Mask
芦荟黄瓜软粉面膜

Help calm down uncomfortable skin conditions. Provide calming and moisturizing to skin. All skin types.

帮助舒缓不适的肌肤状况。为肌肤提供舒缓和保湿效果。适合所有肤质。

Active Ingredients: Aloe Barbadensis Leaf Juice Powder, ... etc

KPM07 (1000g)



Peppermint Soft Powder Mask
薄荷软粉面膜

Special formulated for oily skin. Help control skin sebum. Refreshing and cooling down skin.

专为油性肌肤特别配方。帮助控制皮脂分泌，清爽并舒缓肌肤。

Active Ingredients: Mentha Piperita Extract, Menthol, ... etc

KPM09 (1000g)



Rose Flower Soft Powder Mask
玫瑰花粉软粉面膜

Provide moisturizing, lightening, and smoothing to skin. Promote the skin suppleness and elasticity. Suitable for all skin types.

为肌肤提供滋润、亮肤和光滑效果。促进皮肤的柔韧性和弹性。适合所有肤质。

Active Ingredients: Rosa Centifolia (Rose) Flower, ... etc

KPM12 (1000g)



Tea Tree Soft Powder Mask
茶树软粉面膜

Reduce the excess skin sebum, clear skin pores. Help reduce skin blemishes and breakouts. Suitable for oily skin types

减少多余的皮脂，清理毛孔。帮助减少肌肤瑕疵和痘痘。适合油性肤质。

Active Ingredients: Melaleuca Alternifolia (Tea Tree) Leaf Oil, ... etc



BEAUTY COTTAGE®
PROFESSIONAL

KPM13 (1000g)



Black & White Sesame Seed Soft Powder Mask
黑白芝麻软粉面膜

Moisturizing, nourishing, firming, anti-wrinkles, antioxidant.

滋润、滋养、紧致、抗皱、抗氧化。

Active Ingredients: Sesamum Indicum (Sesame) Seed Powder, ... etc

KPM15 (1000g)



Yogurt Soft Powder Mask
酸奶软粉面膜

Moisturizing, lightening, and rejuvenating.

滋润、亮肤与焕活。

Active Ingredients: Yogurt Powder, ... etc

KPM16 (1000g)



Phyto Cell Soft Powder Mask
干细胞软粉面膜

Moisturizing, smoothing, anti-fine lines and wrinkles. Brightening and firming the complexion. Suitable for all skin types.

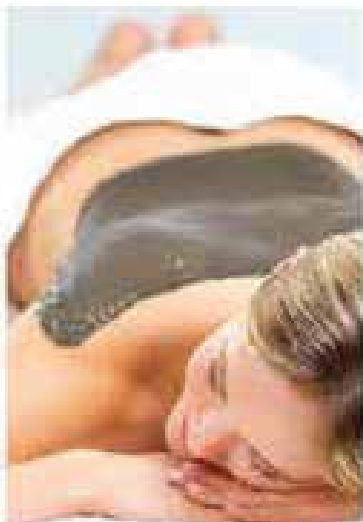
滋润、平滑，抗细纹和皱纹。提亮并紧致肤色。适合所有肤质。

Active Ingredients: Crithmum Maritimum Callus Culture Filtrate (Stem Cell), ... etc



USAGE: Mix the mask powder with the Mask Gel with 1:2 volume. (Mask Gel with 1:3 volume) Stir evenly until homogenized. Apply a thin layer of 1-3mm mask on face or body. After 20-30 minutes drying, gently peel off the mask.

用法: 将软面膜粉与面膜液按1比2的体积比例（与凝胶按1:3的体积比例），搅拌均匀，涂敷于面颈部或身体，呈1-3mm薄层，待20-30分钟干后，揭除面膜。





BEAUTY COTTAGE®
PROFESSIONAL

Face Series 18

Aromatherapy Soft Peel Off Powder Mask 香薰软面膜

KPM42 (1000g)



Lavender Aroma Soft Powder Mask

薰衣草香薰软粉面膜

Smoothing, balancing, and relaxing. All skin types.

平滑、平衡和放松。适合所有肤质。

Active Ingredients: Lavandula Angustifolia (Lavender) Oil, ... etc

KPM43 (1000g)



Lemon Aroma Soft Powder Mask

柠檬香薰软粉面膜

For oily skin, reduce skin excess sebum, clear skin pores.

适合油性肌肤，减少多余的皮脂，清理毛孔。

Active Ingredients: Citrus Medica Limonum (Lemon) Fruit Oil, ... etc

KPM45 (1000g)



Rose Aroma Soft Powder Mask

玫瑰香薰软粉面膜

For dry, delicate skin, moisturizing & calming.

适合干性和敏感肌肤，提供滋润和舒缓效果。

Active Ingredients: Rosa Centifolia (Rose) Flower Oil, ... etc

KPM48-P (1000g)



RAloe Vera & Cucumber Aroma Soft Powder Mask (Rehydrating)

芦荟黄瓜香薰软粉面膜

For all skin types, calming and moisturizing to skin. Calm down uncomfortable skin conditions.

适合所有肤质，舒缓并滋润肌肤。缓解肌肤不适。

Active Ingredients: Aloe Barbadensis Leaf Juice Powder, Cucumis Sativus (Cucumber) Fruit Extract, ...etc



USAGE: Mix the mask powder with the Mask Gel with 1:2 volume. (Mask Gel with 1:3 volume) Stir evenly until homogenized. Apply a thin layer of 1-3mm mask on face or body. After 20-30 minutes drying, gently peel off the mask.

用法: 将软面膜粉与面膜液按1比2的体积比例（与凝胶按1:3的体积比例），搅拌均匀，涂敷于面颈部或身体，呈1-3mm薄层，待20 - 30分钟干后，揭除面膜。



BEAUTY COTTAGE®
PROFESSIONAL

Face Series 18

Aromatherapy Soft Peel Off Powder Mask 香薰软面膜

KPMG01 (1000g)



Activator (Powder Mask Gel) – Lightening & Hydrating

美白滋润软膜调配凝胶

Help lighten and even skin tone. Provide moisturizing and hydrating to skin.

帮助提亮并均匀肤色，为肌肤提供滋润和保湿。

Active Ingredients: Panthenol (Pro-vitamin B5), Sodium Pca, Lactic Acid, Niacinamide, Acetyl Glucosamine, Broussonetia Kazinoki Root Extract, Morus Alba Bark Extract, Pyrus Malus (Apple) Fruit Extract, Camellia Japonica Leaf Extract, Camellia Sinensis Leaf Extract, Centella Asiatica Extract, Galactoarabinan, Tricholoma Matsutake Extract, Aloe Barbadensis (Aloe Vera) Leaf Juice, Mentha Piperita (Peppermint) Oil, Sodium Ascorbyl Phosphate, ...etc

KPMG02 (1000g)



Activator (Powder Mask Gel) – Purifying & Hydrating

净化滋润软膜调配凝胶

Specially formulated for oily, blemishes skin. Help control excess skin oil. Refine skin pores, provide refreshing, toning, smoothing to skin.

专为油性和瑕疵肌肤特别配方。帮助控制多余的皮脂，收敛毛孔，为肌肤提供清爽、紧致和平滑效果。

Active Ingredients: Nasturtium Officinale Extract, Arctium Majus (Burdock) Root Extract, Salvia Officinalis (Sage) Leaf Extract, Citrus Limon (Lemon) Peel Extract, Hedera Helix (Ivy) Leaf Extract, Saponaria Officinalis Leaf/root Extract, Fucus Vesiculosus (Algae) Extract, Hamamelis Virginiana (Witch Hazel) Leaf Extract, Cucumis Sativus (Cucumber) Fruit Extract, Lavandula Angustifolia (Lavender) Oil, Melaleuca Alternifolia (Tea Tree) Leaf Oil, Aloe Barbadensis (Aloe Vera) Leaf Juice, ...etc

KPMG03 (1000g)



Activator (Powder Mask Gel) – Firming & Lifting

紧实结实软膜调配凝胶

Promote skin suppleness and elasticity, moisturizing, nourishing, firming and smoothing the skin. Help reduce fine lines and wrinkles.

促进皮肤的柔韧性和弹性，滋润、滋养、紧致并平滑肌肤。帮助减少细纹和皱纹。

Active Ingredients: Panthenol (Pro-vitamin B5), Hydrolyzed Soy Protein, Spirulina Maxima Extract, Fucus Vesiculosus Extract, Laminaria Digitata Extract, Porphyra Umbilicalis Extract, Ascophyllum Nodosum Extract, Aloe Barbadensis (Aloe Vera) Leaf Juice, Camellia Sinensis (Green Tea) Leaf Extract, ...etc

KPMG04 (1000g)



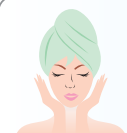
Activator (Powder Mask Gel) – Calming & Hydrating

舒缓滋润软膜调配凝胶

Help calm down skin uncomfortable conditions, Refresh and soften skin texture. Help minimize the enlarged skin pores and smoothen the complexion.

促进皮肤的柔韧性和弹性，滋润、滋养、紧致并平滑肌肤。帮助减少细纹和皱纹。

Active Ingredients: Panthenol (Pro-vitamin B5), Betaine, Aloe Barbadensis (Aloe Vera) Leaf Juice, Chamomilla Recutita (Matricaria) Flower Extract, Aesculus Hippocastanum (Horse Chestnut) Extract, Glycyrrhiza Glabra (Licorice) Root Extract, Cucumis Sativus (Cucumber) Fruit Extract, ...etc



USAGE: Mix the mask powder and activator in volume of powder : gel = 1:3, stir evenly until homogenized. Apply a thin layer of 1-3mm of mask on face or body. After 15-30 minutes drying, gently peel off the mask.

用法: 将面膜粉和凝胶粉以1:3比例混合均匀，涂抹1-3mm厚度的面膜于脸部或身体部位。静待15-30分钟变干后，轻轻揭掉面膜。



BEAUTY COTTAGE®
PROFESSIONAL

Body Series 1

Water Soluble Body Warm Oil (Water Soluble) 身体温热油（水溶性）

KBO01 (1000g)



Water Soluble Body Warm Oil – Ginger

水溶性身体温热油 - 生姜

Thermo-effect water soluble body massage oil helps improve your body contour and provides superior hydrating and moisturizing to your skin. The easy rinse off formula leaves to skin smooth and soft without greasy. Plant extracts and essential oil have been combined together to give you a relaxing, energizing and warming Aromatherapy.

热感水溶性身体按摩油，有助于改善身体线条，并提供卓越的保湿与滋润效果。易冲洗配方让肌肤光滑柔软且无油腻感。植物提取物与精油结合，带来放松、焕活与温热的芳香疗法体验。

Active Ingredients: Paullinia Cupana (Guarana) Fruit Extract, Spirulina Maxima Extract, Fucus Vesiculosus Extract, Laminaria Digitata Extract, Porphyra Umbilicalis Extract, Ascophyllum Nodosum Extract, Zingiber Officinale (Ginger) Root Oil, Aloe Barbadensis (Aloe Vera) Leaf Juice, ... etc

Shake Well Before Use.

KBO02 (1000g)



Water Soluble Body Warm Oil – Geranium

水溶性身体温热油 - 天竺葵

Thermo-effect water soluble body massage oil helps improve your body contour and provides superior hydrating and moisturizing to your skin. The easy rinse off formula leaves to skin smooth and soft without greasy. Plant Aromatherapy.

热效水溶性身体按摩油有助于改善您的身体轮廓，为肌肤提供卓越的滋润和保湿效果。易冲洗的配方让肌肤保持光滑柔软，无油腻感。植物芳香疗法。

Active Ingredients: Paullinia Cupana (Guarana) Fruit Extract, Spirulina Maxima Extract, Fucus Vesiculosus Extract, Laminaria Digitata Extract, Porphyra Umbilicalis Extract, Ascophyllum Nodosum Extract, Geranium Maculatum Oil, Aloe Barbadensis (Aloe Vera) Leaf Juice, ... etc

Shake Well Before Use.

KBO03 (1000g)



Water Soluble Body Warm Oil – Lavender

水溶性身体温热油 - 薰衣草

Thermo-effect water soluble body massage oil helps shape your body contour and provides superior hydrating and moisturizing to your skin. The easy rinse off formula leaves to skin smooth and soft without greasy. Plant extracts and essential oil have been combined together to give you a relaxing, refreshing and balancing Aromatherapy.

热感水溶性身体按摩油，有助于塑造身形，同时提供卓越的保湿与滋润效果。易冲洗配方让肌肤保持光滑柔软，无油腻感。植物提取物与精油结合，带来放松、清新和平衡的芳香疗法体验。

Active Ingredients: Paullinia Cupana (Guarana) Fruit Extract, Spirulina Maxima Extract, Fucus Vesiculosus Extract, Laminaria Digitata Extract, Porphyra Umbilicalis Extract, Ascophyllum Nodosum Extract, Aloe Barbadensis (Aloe Vera) Leaf Juice.

Shake Well Before Use.



USAGE: Apply the Body Warm Oil (Water Soluble) to skin, massage gently. Can be easily wash off or wipe off with water. Shake Well Before Use.

用法: 将产品涂抹于身体部位后轻轻按摩，可用清水洗净或擦净。使用前请摇均。





BEAUTY COTTAGE®
PROFESSIONAL

Body Series 2

Aromatherapy Massage Oil 香薰按摩油

KMO01B (500ml)



Aromatherapy Face & Body Massage Oil – Lavender

香薰按摩油 - 薰衣草

Natural plant-based massage oil enriched with aromatherapy essential oil for a luxury body or face massage. Deeply moisturizing, softening, and smoothing to your skin, promote the circulation. The Lavender essential oil provides relaxing, calming and refreshing to you.

天然植物按摩油，富含芳香疗法精油，为您提供奢华的身体或面部按摩体验。深层滋润、柔软和平滑肌肤，促进血液循环。薰衣草精油具有放松、镇静和提神的功效。

Active Ingredients: Olea Europaea (Olive) Husk Oil, Helianthus Annuus (Sunflower) Seed Oil, Vitis Vinifera (Grape) Seed Oil, Prunus Amygdalus Dulcis (Sweet Almond) Oil, Tocopherol, Aloe Barbadensis (Aloe Vera) Leaf Juice, ... etc

KMO02B (500ml)



Aromatherapy Face & Body Massage Oil – Geranium

香薰按摩油 - 天竺葵

Natural plant-based massage oil enriched with aromatherapy essential oil for a luxury body or face massage. Deeply moisturizing, softening, and smoothing to your skin. Geranium essential oil provides balancing, refreshing and tonifying to you.

天然植物按摩油，富含芳香疗法精油，为您提供奢华的身体或面部按摩体验。深层滋润、柔软和平滑肌肤。天竺葵精油具有平衡、提神和滋养功效。

Active Ingredients: Olea Europaea (Olive) Husk Oil, Helianthus Annuus (Sunflower) Seed Oil, Vitis Vinifera (Grape) Seed Oil, Prunus Amygdalus Dulcis (Sweet Almond) Oil, Aloe Barbadensis (Aloe Vera) Leaf Juice, ... etc

KMO03B (500ml)



Aromatherapy Body Massage Oil – Ginger

香薰按摩油 - 生姜

Natural plant-based massage oil enriched with aromatherapy essential oil for a luxury body massage. Deeply moisturizing, softening, warming and smoothing to your skin. Ginger essential oil provides energizing, warming and tonifying to you.

天然植物按摩油，富含芳香疗法精油，为您提供奢华的身体按摩体验。深层滋润、柔软、温暖和光滑肌肤。姜精油具有提神、温暖和滋养功效。

Active Ingredients: Olea Europaea (Olive) Husk Oil, Helianthus Annuus (Sunflower) Seed Oil, Vitis Vinifera (Grape) Seed Oil, Prunus Amygdalus Dulcis (Sweet Almond) Oil, Zingiber Officinale (Ginger) Root Oil, Aloe Barbadensis (Aloe Vera) Leaf Juice, ... etc

KMO05B (500ml)



Aromatherapy Face & Body Massage Oil – Lemon Grass

香薰按摩油 - 柠檬草

Natural plant-based massage oil (mineral oil free), enriched with aromatherapy essential oil for a luxury body massage. Deeply moisturizing and nourishing to your skin. The Lemon Grass essential oil provides energizing, refreshing and tonifying to you.

天然植物按摩油（无矿物油），富含芳香疗法精油，为您提供奢华的身体按摩体验。深层滋润和滋养肌肤。柠檬草精油具有提神、清新和调理的功效。

Active Ingredients: Olea Europaea (Olive) Husk Oil, Helianthus Annuus (Sunflower) Seed Oil, Vitis Vinifera (Grape) Seed Oil, Prunus Amygdalus Dulcis (Sweet Almond) Oil, Cymbopogon Schoenanthus (Lemongrass) Oil, Aloe Barbadensis (Aloe Vera) Leaf Juice, ... etc



USAGE: Apply the Massage Oil to the palm or the skin, massage gently. Can be used with SPA salt or body Ampoules together for body care.

用法: 将产品倒入手中或在皮肤上，轻轻按摩。可搭配SPA盐或安瓶使用作身体护理用途。





BEAUTY COTTAGE®
PROFESSIONAL

Body Series 3

Body Slimming 美体减肥

KBS01 (1000g)



Body Shaping Gel (Hot) 消脂减肥霜(热)

Help to improve body contour with "chili hot" thermos effect, smoothen and soften the "orange peel" skin appearance as well as stretch marks. Promote skin suppleness and elasticity. Moisturizing and softening the skin.

通过“辣椒热效应”帮助改善身体轮廓，平滑并软化“橙皮”肌肤的外观，以及妊娠纹。促进皮肤的柔韧性和弹性，滋润并柔软肌肤。

Active Ingredients: Capsicum Frutescens Fruit (Chili) Extract, Aesculus Hippocastanum (Horse Chestnut) Extract, Paullinia Cupana (Guarana) Fruit Extract, Camellia Sinensis (Green Tea) Leaf Extract, Caffeine, Methyl Nicotinate, Marine Collagen, Tocopheryl Acetate (Vitamin E), Spirulina Maxima Extract, Fucus Vesiculosus Extract, Laminaria Digitata Extract, Porphyra Umbilicalis Extract, Ascophyllum Nodosum Extract, Aloe Barbadensis (Aloe Vera) Leaf Juice, ... etc

KBS02 (1000g)



Body Contouring Gel (Hot) 消脂减肥凝胶(热)

Help improve body contour with thermos effect. Keep the body fit and firm. Improve skin suppleness and elasticity. Reduce skin "orange peel" appearance. Moisture and soften the skin.

通过热效应帮助改善身体轮廓，保持身体紧致与结实。提升皮肤的柔韧性和弹性，减少肌肤“橙皮”现象。滋润并柔软肌肤。

Active Ingredients: Capsicum Frutescens Fruit (Chili) Extract, Aesculus Hippocastanum (Horse Chestnut) Extract, Camellia Sinensis (Green Tea) Leaf Extract, Paullinia Cupana (Guarana) Fruit Extract, Caffeine, Methyl Nicotinate, Marine Collagen, Aloe Barbadensis (Aloe Vera) Leaf Juice, Spirulina Maxima Extract, Fucus Vesiculosus Extract, Laminaria Digitata Extract, Porphyra Umbilicalis Extract, Ascophyllum Nodosum Extract, ... etc



USAGE: Apply the product on targeted areas such as abdomen, hips, thighs, knees and arms. Massage firmly until the product adsorbed.

Caution: The redness, warmness and sting may appear on the applied skin areas. It will be varnished eventually within minutes. The signs may reduce by applying BC Body Fitness Gel or rinse off with plenty of cool water. Avoid contact with eyes, face and any other body sensitive areas. Wash your hands thoroughly after application. Keep out of reach of children.

用法: 将产品涂抹于特定身体部位如肚子、臀部、大腿、膝盖和手臂，按摩至完全吸收。可以搭配安瓶或其它塑身产品使用。

注意: 使用后可能出现泛红、温热或刺痛感，一般于几分钟后会消失。如刺激感持续，用清水清洗或马上停止使用产品。避免接触眼睛、脸部和其它敏感身体部位。使用后洗净手部，远离儿童。

KBS03 (1000g)



Body Fitness Gel (Cool) 瘦身减肥凝胶(冷)

Enhance the body figure with cooling effect. Help correct and beautify the body contour. Improve the smoothness of the skin as well as the firmness, suppleness, and elasticity.

通过冷却效果增强身体轮廓，帮助修正和美化身体线条。改善肌肤的光滑度、紧致度、柔韧性和弹性。

Active Ingredients: Spirulina Maxima Extract, Fucus Vesiculosus (Algae) Extract, Laminaria Digitata Extract, Porphyra Umbilicalis Extract, Ascophyllum Nodosum Extract, Caffeine, Paullinia Cupana (Guarana) Fruit Extract, Mentha Piperita (Peppermint) Oil, Panthenol (Pro-vitamin B5), Menthol, Marine Collagen, Aloe Barbadensis (Aloe Vera) Leaf Juice, ... etc



USAGE: Apply the product onto target body areas. Massage firmly with circular motion until absorbed fully.

用法: 将产品涂抹于特定身体部位，打圈按摩直至完全吸收。



BEAUTY COTTAGE®
PROFESSIONAL

KBS04 (1000g)

Body Fitness Lotion (Cool) 瘦身减肥液 (冷)



Help to enhance the body figure with cooling sensation. Keep the body fitness, smoothen skin appearance, improve the suppleness, elasticity, and firmness of the skin.

通过冷却感帮助提升身体线条，保持身体的健美，平滑肌肤外观，改善皮肤的柔韧性、弹性和紧致度。

Active Ingredients: Spirulina Maxima Extract, Fucus Vesiculosus (Algae) Extract, Laminaria Digitata Extract, Porphyra Umbilicalis Extract, Ascophyllum Nodosum Extract, Caffeine, Paullinia Cupana (Guarana) Fruit Extract, Mentha Piperita (Peppermint) Oil, Panthenol (Pro-vitamin B5), Menthol, Aloe Barbadensis (Aloe Vera) Leaf Juice, ... etc

USAGE: Wrap a wet cloth that contains Body Fitness Lotion around abdomen, thighs and other target body areas follow up by other body fitness care process. (The ratio of Body Fitness Lotion and water is 1:5)

用法: 将紧实霜和清水以1:5比例混合均匀，涂抹于身体部位后，如肚子、大腿或其他部位，接着用湿毛巾包裹。

Body Series 4

Body Contouring Essence 减肥精华素

KCE01G

Ginger Contouring Essence 生姜祛风减肥精华素



15Gx6PCS

Help to reshape body contour. Ginger essence helps to warm up the body.

帮助重塑身体轮廓。生姜精华有助于温暖身体。

Active Ingredients: Zingiber Officinale (Ginger) Root Powder, Spirulina Maxima Extract, Fucus Vesiculosus Extract, Laminaria Digitata Extract, Porphyra Umbilicalis Extract, Ascophyllum Nodosum Extract, Zingiber Officinale (Ginger) Root Oil, ... etc

KCE02G

Seaweed Contouring Essence 海藻消肿减肥精华素



15Gx6PCS

Help firm the body figure. Menthol helps cooling down skin.

帮助紧致身体线条。薄荷醇有助于舒缓降温肌肤。

Active Ingredients: Laminaria Digitata Powder, Spirulina Maxima Extract, Fucus Vesiculosus Extract, Laminaria Digitata Extract, Porphyra Umbilicalis Extract, Ascophyllum Nodosum Extract, Menthol, Ocimum Basilicum (Basil) Oil, ... etc

USAGE: Shake the essence before use. Apply on targeted areas, massage firmly for a while, then rinse off thoroughly. To achieve better results, use together with slimming equipments and other body contouring products.

用法: 使用前，将瓶内精华素用力摇匀，然后涂于身体减肥部位，涂抹均匀，再配合减肥仪器加减肥凝胶、减肥霜和体膜使用。注意：防止儿童接触。避免进入眼睛，如有发生，请用大量清水冲洗。





BEAUTY COTTAGE®
PROFESSIONAL

Body Series 5

Body Slimming Ampoule 减肥安瓶

KBA01

Body Shaping Ampoule (Hot) 消脂减肥精华(热)



Help to reshape body contour. Help reduce and improve the 'orange peel' appearance. Improve skin suppleness and elasticity. Smoothen stretch marks.

帮助重塑身体轮廓，减少并改善“橙皮”肤的外观。提升皮肤的柔韧性和弹性，平滑妊娠纹。

Active Ingredients: Paullinia Cupana (Guarana) Fruit Extract, Spirulina Maxima Extract, Fucus Vesiculosus Extract, Laminaria Digitata Extract, Porphyra Umbilicalis Extract, Ascophyllum Nodosum Extract, Camellia Sinensis (Green Tea) Leaf Extract, Caffeine, Capsicum Frutescens (Chili) Fruit Extract, Citrus Aurantifolia (Lime) Oil, Aloe Barbadensis (Aloe Vera) Leaf Juice, ... etc



USAGE: Apply the product on targeted areas such as abdomen, hips, thighs, knees and arms. Massage firmly until the product adsorbed.

用法: 将减肥精华涂于身体肥胖部位，例如腹部、臀部、大腿、手臂等，用力按摩直到产品完全吸收或配合仪器和减肥凝胶、减肥霜效果更佳。

Body Series 6

Body Scrubber 美体磨砂

KBS07

Body Scrubber (Milk) 磨砂乳



Massage the body skin and gentle scrub away the skin excess dead cells. Moisturizing and nourishing the skin while scrubbing as well as smoothen and soften the skin. Leave to you a fairer and more radiant skin texture.

按摩身体肌肤，轻柔去除多余的死皮细胞。在去角质的同时滋润和滋养肌肤，令肌肤更加平滑柔软。让您的肌肤呈现更加白皙和光彩照人的质感。

Active Ingredients: Panthenol (Pro-Vitamin B5), Tocopheryl Acetate (Vitamin E), Niacinamide (Vitamin B3), Rose Centifolia (Rose) Flower Water, Aloe Barbadensis (Aloe Vera) Leaf Juice, Cucumis Sativus (Cucumber) Fruit Extract, ... etc

KBS08

Body Scrubber (Gel) 磨砂凝胶



Effectively remove excess dead skin cells which cause skin look dull and rough from skin surface. Improve skin suppleness and elasticity, as well as against stretch marks. Moisturizing, nourishing and firm skin while scrubbing. Contain essential oils that provide a luxurious and relaxed feeling. Keep skin fair and lighten skin tone.

有效去除表面多余的死皮细胞，改善肌肤暗沉和粗糙。提升皮肤的柔韧性和弹性，有助于防止妊娠纹。在去角质的同时滋润、滋养并紧致肌肤。含有精油，提供奢华且放松的感觉。保持肌肤白皙，提亮肤色。

Active Ingredients: Aloe Barbadensis (Aloe Vera) Leaf Juice, Chamomilla Recutita (Matricaria) Flower Extract, Aesculus Hippocastanum (Horse Chestnut) Extract, Glycyrrhiza Glabra (Licorice) Root Extract, Cucumis Sativus (Cucumber) Fruit Extract, Camellia Sinensis (Green Tea) Leaf Extract, Panthenol (Pro-Vitamin B5), ... etc



USAGE: Gently massage and scrub body with Body Scrubber (Milk / Gel). Take a little longer time on heavy abdomen, thighs, hips, knees and arms. Wipe off or rinse off.

用法: 用磨砂（乳/凝胶）轻轻地按摩磨砂身体，去角质，死皮，然后擦干净或用清水冲洗干净。



BEAUTY COTTAGE®
PROFESSIONAL

Body Series 7

Salt Body Scrub Wash 美体磨砂浴盐

KSS01G

Ginger Salt Body Scrub Wash 生姜祛风磨砂浴盐 (泡沫型)



Effectively remove excess dead cells from body skin surface, smoothen, soften, and brighten the skin. Help remove extra water content in the body skin. Help shape the body contour. Ginger Oil has a warming effect.

有效去除身体肌肤表面多余的死皮细胞，平滑、柔软并提亮肌肤。帮助去除肌肤中过多的水分，塑造身体轮廓。姜油具有温暖效果。

Active Ingredients: Panthenol (Pro-Vitamin B5), Aloe Barbadensis (Aloe Vera) Leaf Juice, Zingiber Officinal (Ginger) Root Oil, Cymbopogon Schonenanthus (Lemon Grass) Oil, Cucumis Sativus (Cucumber) Fruit Extract, ... etc



KSS02S

Seaweed Green Tea Salt Body Scrub Wash 海藻绿茶消肿磨砂浴盐 (泡沫型)



Effectively remove excess dead skin cells. Deep clean and refine the skin, it smoothen, softens, and brightens the skin as well. Help to reshape the body figure with cooling sensation.

有效去除多余的死皮细胞，深层清洁并细化肌肤，平滑、柔软并提亮肌肤。通过冷却感帮助重塑身体轮廓。

Active Ingredients: Panthenol (Pro-vitamin B5), Spirulina Maxima Extract, Fucus Vesiculosus Extract, Laminaria Digitata Extract, Porphyra Umbilicalis Extract, Ascophyllum Nodosum Extract, Camellia Sinensis (Green Tea) Leaf Extract, ... etc



USAGE 使用方法：

- A) Direct apply on body, massage it gently, and rinse off with water. or
- B) Wet body, apply the salt scrub wash onto palm, mix with water to work up rich foam, massage gently than rinse off with water.
- C) Put the salt scrub wash into bathtub to have a bath and rinse off with water.

- A) 直接涂抹于身体，轻轻按摩后洗净。
- B) 湿身后，倒入产品在手心，混合清水揉搓起泡后轻轻按摩在身体后洗净。
- C) 将适量产品倒入浴缸中，浸泡全身后洗净。

Caution: Avoid wounded or irritated skin. Avoid contact with eyes, if happen rinse off thoroughly with water.

注意： 如有伤口或皮肤易刺激，请避免使用。避免接触眼睛，如接触请用清水洗净。

Body Series 8

Body Powder Mask 美体粉膜

KBM01G (1000g)

Ginger Body Powder Mask 生姜祛风减肥体膜



Help reshape body contour. Smoothen and soften the skin. Firm and brighten skin texture as well.

帮助重塑身体轮廓，平滑并柔软肌肤，同时紧致并提亮肌肤质地。

Active Ingredients: Zingiber Officinale (Ginger) Root Powder, Sodium Ascorbyl Phosphate (Vitamin C), ... etc

USAGE: Two portions of mask power mix with one portion of water, mix it evenly to a paste, apply on targeted areas, after 30 minutes, rinse off with water.

用法： 取2份粉与1份水调和均匀成湿泥状，涂抹于盖有纱布的身体减肥部位，30分钟后用水清洗干净。



BEAUTY COTTAGE®
PROFESSIONAL

Body Series 9

Body Lotion 美体美白防晒霜

KBL01 (500g)



Body Milk – Moisturizing, Hydrating & UV Protection 保湿滋润防护乳 - 滋润补水&抗UV防护

Provide protection against UVA & UVB, keep skin tone even and fair, help to minimize the skin uncomfortable conditions for sun exposure. Provide moisturizing, smoothing, and softening to skin.

提供UVA和UVB保护，保持肤色均匀白皙，帮助减少阳光暴晒引起的肌肤不适。为肌肤提供滋润、平滑和柔软效果。

Active Ingredients: Homosalate, Methylene Bis-benzotriazolyl Tetramethylbutylphenol, Titanium Dioxide, Betaine, Butyrospermum Parkii (Shea) Butter, Panthenol (Pro-vitamin B5), Aloe Barbadensis (Aloe Vera) Leaf Juice, Tocopheryl Acetate (Vitamin E), Sodium Hyaluronate, Carnosine, ... etc

USAGE: : Apply to cleansed body skin, also can be used as hand cream.
用法：将产品涂抹于干净的肌肤上，或可用作护手霜。

Body Series 10

Breast Serum 美胸精华素

KB01 (500g)



6Gx6PCS

Phyto Breast Serum 美胸精华素

Exclusive blend extracted from plants; this Phyto-estrogen-like breast serum helps to enhance the breasts contour. Besides lift-up and firm the sagged breasts. It also offering strengthen and elasticity to the skin, which impart the suppleness and velvet to the skin.

精选植物提取的独特混合物，类植物雌激素胸部精华有助于提升胸部轮廓。除了提拉紧致下垂的胸部外，还能增强肌肤的弹性和紧致感，使肌肤更加柔韧和丝滑。

Active Ingredients: Pueraria Miri_ca Root Extract, Kigelia Africana Fruit Extract, Ginkgo Biloba Leaf Extract, Hydrolyzed Rna, Hydrolyzed Dna, Acetyl Glucosamine, Sh-oligopeptide-1, Sh-oligopeptide-2, Sh-polypeptide-1, Sh-polypeptide-9, Sh-polypeptide-11, Bacillus/soybean Ferment Extract, Sodium Hyaluronate, ... etc

USAGE: Apply the product evenly on breasts, massage gently with an upwards circle motion until fully absorbed by skin.
用法：将产品均匀地涂抹于乳房，以向上打圈的方式，轻轻按摩，直到完全被皮肤吸收。

